

# AIR WORKS

AIR WORKS AUCTION



See inside for an  
Air Works Auction  
listing and Mt. Hope  
Showcase information.  
Plus many vendor ads!

# AUCTION



*Two Events... One Location*

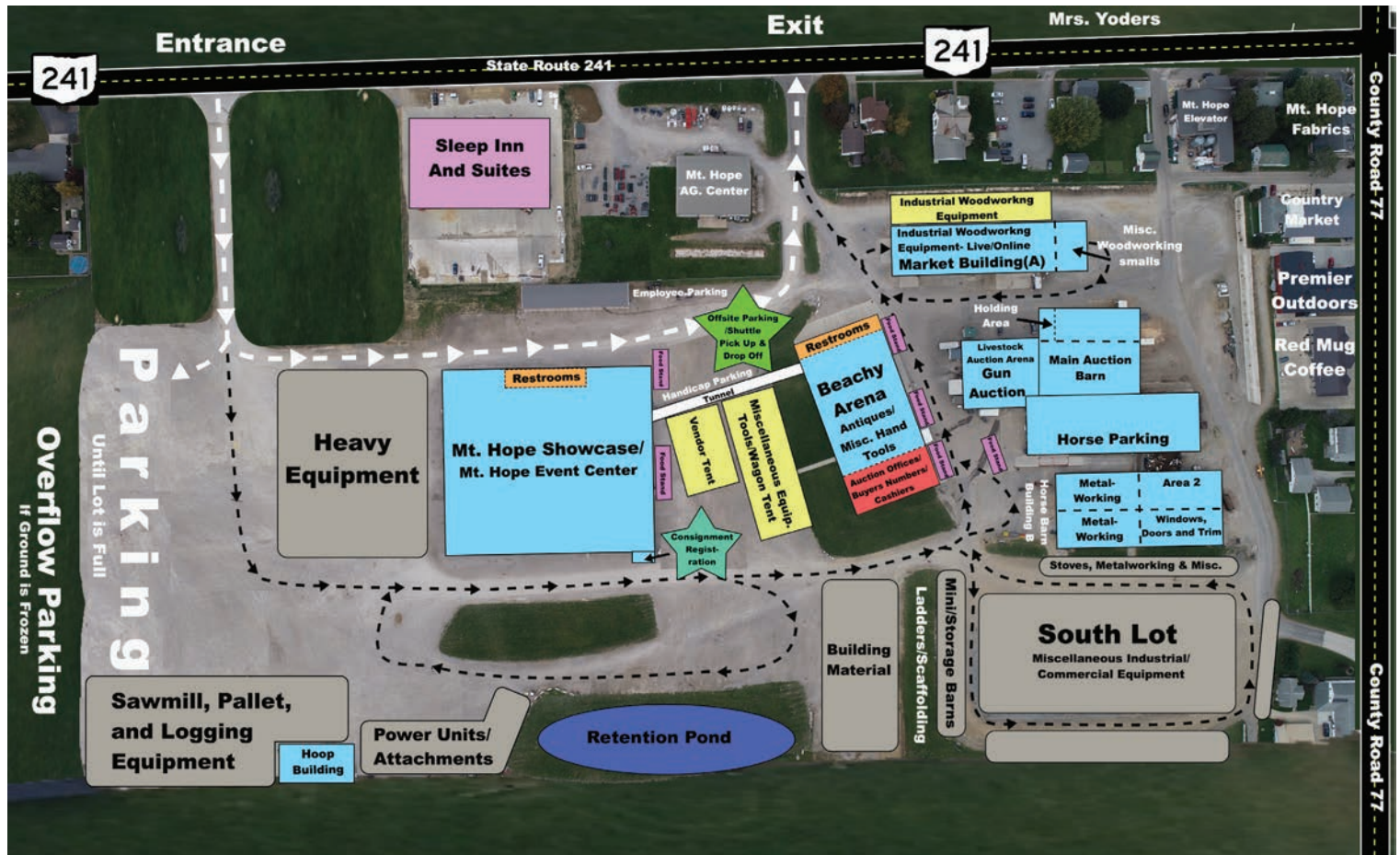
Mt Hope Auction Grounds, 8076 SR 241, Millersburg, OH 44654

# SHOWCASE

February  
18-19-20, 2021

*Mt. Hope*  
**SHOWCASE**

# Welcome to the 32nd Annual Air Works Auction!



## Air Works Consignment Auction Location: Mt Hope Auction Grounds, 8076 SR 241, Millersburg, OH 44654

### Auction Terms and Information

**Auction Terms:** Cash, Check or Credit Card w/valid ID. There will be a 5% buyer's premium on-site with an additional 3% for all credit card purchases. Different terms for Online bidding will apply. All items are sold "as is, where is with no warranty expressed or implied." Sales tax does apply unless exempt.

**Auction Information:** For complete and updated auction details, catalogs & photo's as well as online bidding links, visit [AirWorksAuction.com](http://AirWorksAuction.com) or [AuctionZip.com](http://AuctionZip.com) auction ID 40056. (No internet = No problem) Request full auction listings and catalogs from the Air Works Auction Office at P.O. Box 242 Kidron, OH 44636 or call office at **330.749.4362**.

**Check Out & Loading:** Buyer's will need to have a paid receipt to enter auction area and before loading. Assistance for loading is available on sale day plus the following week Monday through Wednesday from 8:00 AM to 4:00 PM. NOTE: The Auction reserves the right to sell or dispose of items left on the premises 7 days after the sale. Send a copy of your paid receipt with your hauler. The lot is closed on Sunday.

**Consignment Unloading Schedule:** Monday Feb. 15th from 8:00 A.M. to 8:00 P.M., Tuesday & Wednesday Feb. 16 & 17th from 8:00 A.M. to 4:00 P.M. Thursday Morning, Feb. 18th, unloading is 7:30 to 12:00 and **RESERVED FOR OUT OF STATE CONSIGNORS.**

It is our goal that your auction experience is a pleasant one. Your understanding and compliance with the above terms will help accomplish this goal.

#### Air Works Consignment Auction, Ltd.

PO Box 242 · Kidron OH 44636

**330.749.4362 (Office)**

**330.816.0006 (Fax)**

office@airworksauktion.com

**AirWorksAuction.com**

#### Nearby Lodging

Amish Door	330.359.7996	Comfort Inn	330.893.7400
Berlin Encore	888.988.2414	Holiday Inn Express	234.301.9005
Berlin Grande	330.403.3050	Sleep Inn/Mt. Hope	330.294.9977
Berlin Village	330.893.2861	Wallhouse	800.824.2013
Carlisle Inn	855.400.2275	Zincks Inn	330.893.6600



## Air Works Auction - Amateur Auctioneers' Showcase

The Air Works Auction will host an Amateur Auctioneer Showcase featuring various talented rookie auctioneers. If you or someone you know enjoys auctioneering and wants to try their hand behind the auction block this will be an opportunity to do that. Call in and register in advance at 330.749.4362.

The showcase will be a benefit auction and proceeds will go towards the Kidron Volunteer Fire Department Building Fund. The all-volunteer department's goal is to begin construction in early Summer, 2021.

## Free Coffee Mug

Bevanda, Air Works Auction, Mt. Hope Showcase, Air Works Ltd. and AW Machinery are pleased to offer a FREE Coffee Mug during our three-day event! A limited number of mugs will be given away to the first several hundred visitors to the Vendor Tent outside the Showcase building. Quantities vary by day so make sure to visit early!



Circa 1998

## 30th Anniversary Book Available

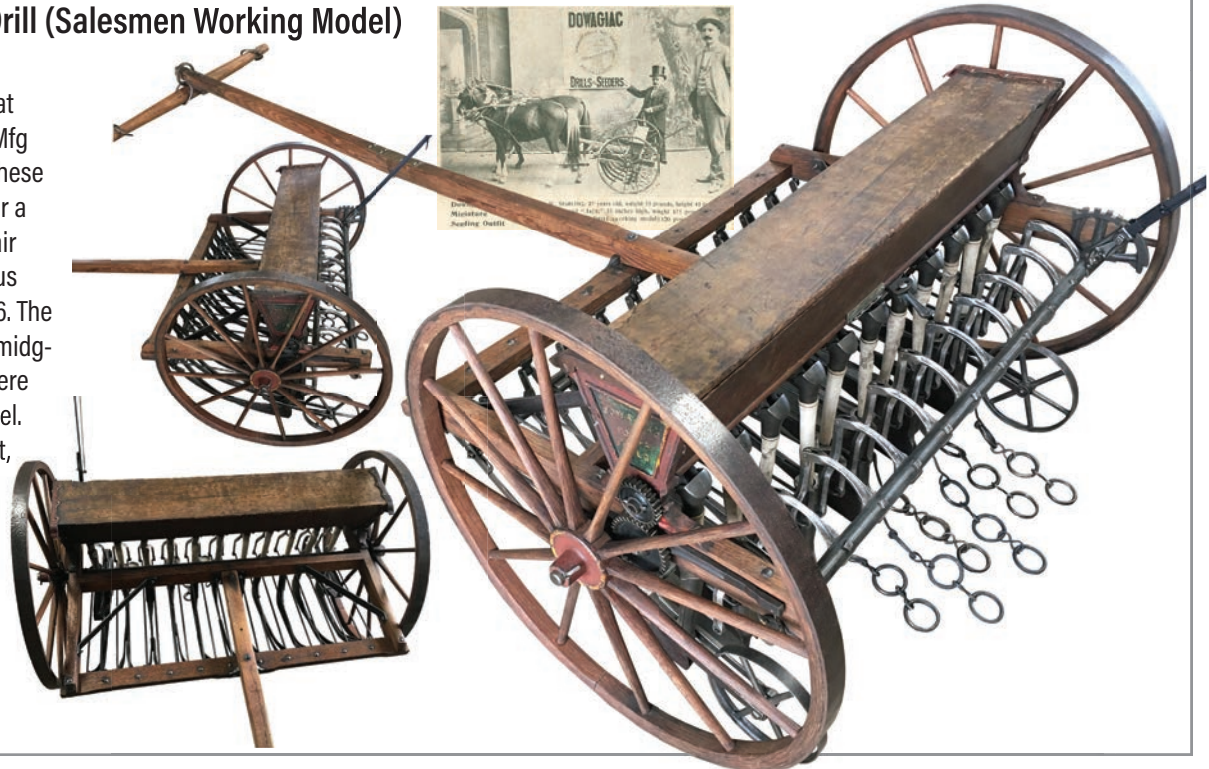
A limited quantity of Reuben Troyer's "Commemorative 30th Anniversary" book are still available! Make sure to grab yours at the Auction Office in the Main Arena.



Circa 2020

## 1893 Dowagiac Grain Drill (Salesmen Working Model)

Here's a truly unique and rare highlight that we will be sold at this year's auction. Dowagiac Mfg of Michigan built only two of these small grain drills to be used for a demonstration at the World Fair in Chicago as well as numerous State Fairs between 1893-1896. The remarkable combination of a mid-gt and several small ponies were used to demonstrate this model. One of only two known to exist, with the other drill locating on display at Southwester MI College Museum. Ownership documented to early 1900's. This is a once-in-a-lifetime opportunity to acquire such a rare piece of history.





# Heavy Equipment/Rolling Stock Sells Online/Live Saturday Feb. 20th @ 9AM



Komatsu WA200PZ Loader



JD 648G Skidder



Prentice 384



JD 6500H Dozer



2013 T770 Bobcat Skidsteer



CAT TH220B Telehandler



JLG 943A Telehandler



Komatsu WA200PZ Loader



2005 Komatsu D37 Dozer



New Holland DC100 Dozer



JD 540B Skidder



International Dozer



New Holland D95 Dozer



JD 550 Dozer



JD 750B Dozer



International Semi Tractor



KW Semi Tractor



New 2021 Big Tex Trailer



New Big Tex Dump Trailer

**Dozers & Excavators:** 2019 John Deere 450K LGP Dozer with 86 Hrs. 2005 Komatsu D37EX-21A Dozer, 3269 hrs; Komatsu D31EX-21A dozer, 3400 hrs; John Deere 550 dozer, 1505 hrs; New Holland DC100 dozer w/winch, 100 hp Cummins, 3400 hrs, hyd drive; New Holland D95WT dozer w/6 way blade, 4200 hrs; John Deere 650H LT dozer, 70% u.c., 4,100 hrs, (meter shows 930); International dozer w/ Isaacson WO 14 winch, shows 3695 hrs; John Deere 750B Dozer, 6414 motor w/600 hrs; Komatsu D41E Dozer, 2700 hrs; 2002 Case 650H, 7529 hrs, cab/heat; 1995 Cat D5C w/winch, 1072 hrs, cab/heat; Komatsu D31A Dozer w/winch; Fiat Allis FL 10-B track loader, 4141 hrs, 80% u.c.; Takeuchi TB145 excavator; **Wheel Loaders:** Komatsu WA200PZ-6 wheel loader w/forks, 15,320 hrs; 2017 Komatsu WA200-7 wheel loader, 6600hrs. **Skid Steers:** 2013 Bobcat T770 skidsteer, 2,800 hrs, 2 speed, 88 hp 4 cylinder engine, new oil pump, engine gone over; Bobcat 753G skid loader, 2.2 Kubota, 2070 hrs., aux. hydraulics; New Holland L565 skid steer; Gehl 4835 4835 SXT skid loader w/grapple bucket; 2003 Bobcat T-190 skid loader, rubber tracks; **Forklifts:** MF6500, 9300 hrs, 6500 lb. lift cap; Hyster forklift; **Telehandlers:** Cat TH220B telehandler, 4WD, 7,000 lb; JLG 943A telehandler, 43' reach, 9,000 lb lift cap; **Log Loaders:** 2011 John Deere 437D knuckle-boom log loader on trailer; 2011 JD 437D Knuckleboom, 11,253 hrs; Apprentice 384 knuckleboom, 1,000 hrs. on new motor; **Skidders:** John Deere 540B skidder, 50% tires, 1396 hrs after new motor; JD 640 straight grapple skidder w/winch; 1999 JD 648G grapple skidder, 80% tires, 650 hrs on new 6414 motor; JD 640 straight grapple skidder w/winch; **Trucks:** 2002 Ford F250 4 door truck, 7.3 diesel, 174k miles, w/custom aluminum tool-box bed; 1985 International

943 semi-tractor, single axle; 1996 International 9400 semi-tractor, lots of upgrades; ; 1980 Kenworth W900L, V92 Detroit Silver; 1987 Ford L8000 single axle truck; 2004 International 7400 16' tandem axle dump truck; 2005 Peterbilt 335 single axle dump truck; 2006 Peterbilt 335 tandem axle truck w/fifth wheel; 1995 GMC conventional w/wetline; ; 2005 Ford F650 rollback truck, 21' bed; 1999 Isuzu dump truck, 10' bed; 1995 Ford L9000 13' dozer bed truck w/dovetail; 2005 Dodge ¾ ton 4x4 truck; **Trailers:** 2015 CornPro VT28 tandem dually gooseneck trailer, 16,000 GVW, 18' w/2' dovetail, electric/hydraulic brakes; 1989 Talbert TD-35S-HRG S series, self-contained hydraulic drop-deck lowboy trailer, 35 ton cap, 42' long; Tec Heil 22' aluminum dump semi-trailer, wet line hyd; 2 = New 2021 Big Tex model 14LP and 14GX, 16' gooseneck dump trailers, 14,000 GVWR, HD ramps; New 2021 Big Tex 14GN gooseneck flatbed tandem trailer, 25' bed w/5' dovetail; 3-semi van trailers for storage; 1992 BLN 36' log trailer; 1986 ASM 40' log trailer; 1996 ASM 40' log trailer; Parker 8' x 24' bumper hitch trailer; 2001 Transcraft Eagle trailer, 48'; ; 1998 Tara 48' hot shot step deck trailer; 1993 CHMT 48' hot shot step deck trailer **Cranes:** Galion model 80 all-terrain crane, 16k max lift w/outriggers, 6 cyl diesel, shows 2659 hrs; **Attachments:** Wheel loader bucket, fits Komatsu WA200PZ; **Miscellaneous Equipment:** Reese 16k 5th wheel hitch; 4 = 17.5 x 25 foam filled tires, fits a Cat 924 loader; 40 = 4" x 8" x 20' logger mats; **Winches:** 3 = John Deere 4000 series winches, good condition. **PLUS,** a large variety of misc. skid loader attachments including forks, buckets, etc. **\*\*This is just a partial listing. More equipment is being consigned daily\*\***



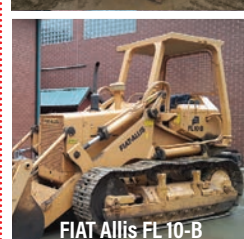
2011 JD 437D Knuckleboom



CAT D5C Dozer



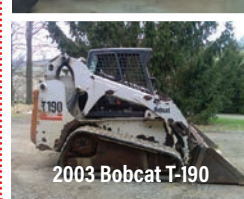
Case 650H-WT Dozer



FIAT Allis FL 10-B



2019 JD Dozer



2003 Bobcat T-190



Komatsu D31A Dozer



2014 MC266 Rotochopper



Dyna SC-15 Log Splitter



Morbark Chipper & Precision Shaker



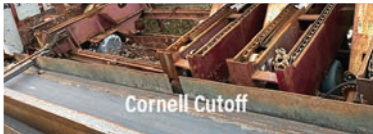
Woodmizer MH4D Resaw



2003 Woodmizer LT70



Morgan Cutoff



Cornell Cutoff



Cleerman Carriage



16' Conveyor



10' Conveyor



Hydraulic Unit



Timber Buddy  
XP-380 Sawmill



Lumber Carts



NEW Pro-Cut  
Chop Saw

**Sawmills:** New 2021 Timber Buddy XT380 Super Hyd. Bandmill w/120 hp JD, computer setworks; Frick 01 Sawmill w/60' track, 18' mantel shaft with universal, 15' carriage w/4 head blocks, 3 F style saw blades and sharpener; 2003 Woodmizer LT70, recently refurbished; Brett double arbor gang saw, rebuilt, 6" x 13" capacity; Cleerman husk, 56" blade w/18" x 5' off bear belt; Cleerman carriage & 46' track, includes 36" 3 HB, 12v over air setworks, cab, controls and drive; **Chippers/Shakers:** Morbark 58" Chipper, 6 knives, 125 hp electric motor and Precision shaker/cyclone, sells together; 2014 Rotochopper MC266 horizontal chopper, Cat C15 engine, 2852 hrs; **Edgers:** Newman Whitney KF-100 edger feed system w/laser rack; Shurman 4TA48 2 blade 48" edger w/top arbor; Corley Edger, 4" x 32" w/infeed & tailing belt, 2 movable blades; Tower edger 32" wide, 3 blades 2 movable; **Resaws:** Woodmizer MH4D 4 head resaw, 1" bands, modified w/DW Bands air guides and better feed system; Cantek Resaw, like-new; Baker 4-Head Resaw, w/lineshaft, includes 12" intake blower, new guides, wheels re-crowned; New Pro-Cut single head resaw w/return, lineshaft ready; **Trim & Chop Saws:** Newman Whitney KM16 16' 5 head trim saw, electric motors; Cornell 5 head cutoff saw, 6" x 16' capacity; Morgan 4 head cutoff saw, 6" capacity; Swing type chop saw, will cut ties, no power; Double end trim saw, set up to do 8" poles, electric; New Pro-Cut

chop saw, 7" x 9" cap., lineshaft ready; **Unscramblers:** Lumber tilt hoist w/3ph drive, & Rufnek gear; 4 strand unscrambler, 10' wide, no drive; **Debarkers:** Mellott 36" Debarker, hyd. drive, joy stick controls; **Log Turners:** Mellott log turner; **Conveyors:** 24" x 16' belt conveyor; 10' x 48" transfer belt conveyor; 36" x 23' rollcase, gearbox drive, heavy duty; 24" x 24' rollcase w/lumber kickers, electric; **Decks:** 2 strand green chain, 16' long, rooftop chain, hyd; 3 strand log deck, 10' x 17' w/hyd drive; **Notchers:** MMT single head notcher w/hyd. motor; **Firewood Processor:** Dyna SC-15, sn181249, 34 hp Cat diesel; Halverson HWP-140, sn1010-031, firewood processor mounts on front end of loader; **Misc:** Lumber carts, 42" wide from 6' to 16' long, some with new casters, heavy duty; Malone 2" band sharpener, hyd drive; Band tooth setter, air/hyd drive; Cooks Cat Claw sharpener, lineshaft; Armstrong #4 LH sharpener, air powered w/Armstrong shaper and swage; Alert detection system VLF-450 w/magnets and controls; lots of quick coupler blower pipe, 4" to 18" diameter;

**LISTEN/BID BY PHONE** You can listen to the auction live by calling the conference line at 712.432.8773. Conference ID is (274448#) For bidding purposes, call to 574.238.5292 or 574.349.8570. If you do want to bid via phone, please pre-register in advance by calling Mel at 574.238.9469 Lots will be added to this catalog so if you have fax or email, call Mel for an updated catalog one day before the auction.

**One Owner:** 1994 Meadows portable mill w/manual hand sets, RH 56" blade includes blower; Cornell 3 blade edger, 2 movable blades, rebuilt 1 year ago; Morgan single head resaw w/28 hp Kohler engine; Homemade 7" x 12" cut off saw; 20" blower w/5.5 hp engine mounted on skid; 6' x 10' slab wagon; Minneapolis Moline 605 120 hp power unit w/clutch.



Corley Edger



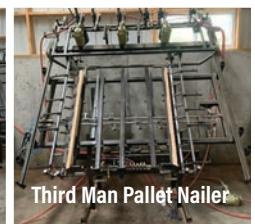
Shurman 4TA48 Edger



Baker Resaw



Pallet Stacker



Third Man Pallet Nailers



Sawmill, Logging & Pallet Shop Equipment auction brought to you in partnership between Air Works Auction and Bright Star  
Eugene Hochstetler - 260.350.8953



CR Onsrud 145G12D CNC Router



SCM Hydraulic 5-Head Moulder



Weinig 5-Head Moulder



Streibig Vertical Panel Saw



CR Onsrud Pin Router



Powermatic PM2000 Table Saw



Burlington 37" Wide Belt Sander



Honeyville Cyclone and Blower



Boere 37" 2-Head Wide Belt Sander



Locatelli LEOS-120 Turning Lathe



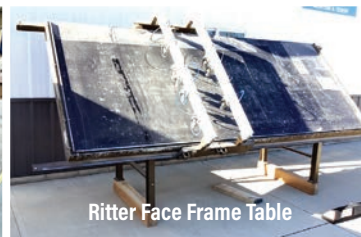
Cantek C12RSH Straight Line Rip Saw



New York 10HP Blower



Sand Pro Downdraft Table



Ritter Face Frame Table



Complete Hydraulic System



Cemco 2 Head 37" x 103" Wide Belt Sander



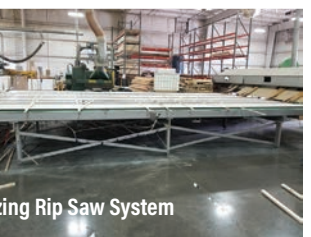
Deihl SL52 Straight Line Rip Saws



Extrema 24" Double Sided Spiral Head Planer



Paul CGL Optimizing Rip Saw System



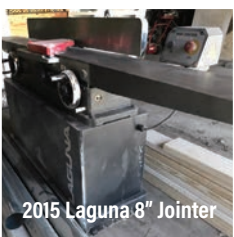
## Complete Shop Liquidation (to be sold through regular woodworking rings)



2018 18" Oliver Wide Belt Sander



2019 Oliver M-4705 Shaper



2015 Laguna 8" Jointer



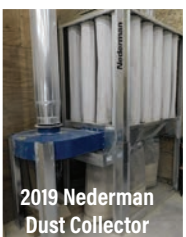
Booth Filters



2016 Laguna Band Saw



2003 Grizzly Shaper



2019 Nederman Dust Collector



Powermatic Power Feed  
Delta 34-994 Power Feed

**Table Saws:** New SCM NOVA 400 10' sliding table saw, 230v 3ph; New Oliver 4016 10" table saw w/52" table, 230v 3-ph; New Oliver 10040 10" table saw w/52' table, 220v; Cantek C12RS straight line rip saw 230v 3 ph; Powermatic 66-TA table saw, 220v 3 ph; Powermatic 10" table saw, hyd; Powermatic 66 table saw w/sliding table, 230v, 3 ph; Powermatic PM2000 table saw w/52" fence, 230v, 3 ph; Grizzly 10" table saw, 220v; Powermatic 66 table saw, 220v; Delta Unisaw 10" table saw w/fence, 220v; Delta contractor table saw, 110v; Powermatic tablesaw lineshaft ready

w/clutch;  
**Cutoff Saws:** Custom, toe kick notcher machine, 230v, 3 ph; Dyna CS60 post saw, lineshaft;  
**Bandsaws:** New Stonewood SBW6300H 24" bandsaw, heavy duty, 220v 3 ph; Delta 26-203 14" bandsaw, 220v; 2009 Grizzly G0555 bandsaw, lineshaft ready; Powermatic 81, 20" bandsaw, lineshaft;  
**Panel Saws;** 2003 Streibig Optisaw 2, vertical panel saw, 220v 3 ph;  
**Rip Saws;** Paul CGL gang rip saw w/4 moving blades, infeed/outfeed, optimizing, skewing

on infeed, control panel, 480v; Stutzman Infeed roller conveyor system w/scissor lift; Paul 13' x 20' green chain, sorting; Note: This complete system sells off-site w/previous owner assistants available to re-install; Diehl 750 straight line rip saw, lineshaft; (2) Deihl SL52 Straight line rip saws, 460v 3-ph  
**Planers:** New Stonewood ST-24AH 24" planer w/spiral head, 230v 3 ph; Buss 30" planer, 15 hp, 220v 3ph; 2007 Grizzly 60603X 25" spiral head planer, 15 hp, 220v 3 ph; Delta 24" planer w/spiral head, lineshaft; IMC PW18 double sided 18" planer, 220v/440v; IMC



PW18 double sided 18" planer, 220v/440v; Extrema 24" Double sided spiral head planer, 460v 3-ph

**Lathe:** 1982 Locatelli LEOS-120 turning lathe w/sanding head, 220v; 1982 Locatelli MKN 1200 semi-automatic copy lathe w/2 knives on hyd. tracing system;

**Jointers;** New Oliver 4225, 6" parallelogram jointer spiral head, 115v 1 hp; Delta 37-220 6" long bed jointer, electric; Powermatic FS305 12" jointer, 220v 3 ph;

**Shapers:** New Oliver 4705, 1 1/4" shaper w/digital readout, 230v 3 ph; New Oliver 10047.001 1 1/4" shaper, 220v 3 hp;

**Pin & CNC Routers;** C.R. Onsrud 2427 Inverted router, 5 hp, 3 ph; C.R. Onsrud CNC router, 3-axis, 61" x 145" table, HSK-63F 12 position automatic tool changer,, 230v 3 ph;

**Molders:** 1994 Weinig P23 5 head molder, 230v 3 ph; SCM Superset 23 molder, 5 heads, hyd; Extrema XI625 6 head moulder, lineshaft w/clutches; Extrema XI625 6 head molder, lineshaft w/clutches;

**Edge & Drum Sanders:** 2016 Super Max 19-38 drum sander, 1 3/4 hp, 110v 1 ph, like new; Custom, feed thru bent part sander, lineshaft;

**Wide Belt Sanders:** Burlington 37" wide belt sander, 20 hp 230v; Shop Fox 15" wide belt

sander; Shong Shing 15" wide belt sander; Boere double head 37" wide belt sander, air tracking, hyd, good condition; Timesaver double head 43" wide belt sander, air tracking, 480v, 3 ph; Cemco 2 head 37" x 103" wide belt sander, pneumatic tracking, hyd;

**Boring Machines:** New Stonewood WUS024-1 13 spindle line bore w/ stand, 110v; New Stonewood STO-2006 pocket hole machine, lineshaft; Grass hinge drilling machine, hyd; Ritter R46 double row line boring machine, 460v, 3 ph; Brookman, 2 spindle horizontal dowell boring machine, 230v, 3 ph; MVM pocket hole machine, air powered; Dyna post drill machine, lineshaft;

**Mortise & Tenoners:** Custom Built double end tenoner for newel posts, 460v, 3 ph;

**Edge Banders:** New Oliver 6305 6" x 89" edge sander, 115v 1.5 hp; Rockwell Vario speed drill press, 220v;

**Drill Presses:** New Oliver 10062 17" floor drill press, 115v; Green Lee drill press w/foot pedal, 230v, 3 ph; Powermatic 1150 drill press; Delta 17-900 drill press;

**Dovetailers:** New Stonewood JDT65 manual dovetailer, 220v 1ph;

**Door & Drawer Clamps :** J.C. Uhling HP4000 post press clamp, pneumatic; Gannomat 260 case clamp, pneumatic;

**Face Frame Tables:** New Stonewood 4008 USA 4 x 8 face frame table w/3 pneumatic clamps; 2 = Ritter face frame tables 5' x 12', pneumatic;

**Downdraft Tables;** New DustPro 3x6 sanding table, 115v; Sand Pro M6033, 33" x 60" downdraft table, 110v;

**Dust Collectors:** New Stonewood 4043A 2 bag dust collector, 1800 cfm, 220v 1 ph; New Stonewood 2042K 1 bag dust collector, 115v 1 ph; New Nederman S-1000 dust collector, 5000 cfm, 230/480v 3 ph; Murphy Rogers ET12E15 sawdust bin w/cyclone; New York belt drive blower, 230/460v 10 hp motor, 1740 rpm, 5100 cfm, 13" inlet, 10.5" x 12.5" outlet; Honeyville dust system, 8" blower w/ cyclone & return bag house; Dust collection system w/9" inlet blower, 36" cyclone and return air;

**Misc. Woodworking Equipment:** 1978 Weinig R930L profile grinder 230v 3 ph; assortment of 25 - 1 1/2" bore molder heads; Champion CRN50A1 50cfm air dryer, 115v; Hydraulic system includes, tank, valves, 4 pumps, works good; A complete liquidation of a flooring installation company including tools and sandpaper and supplies;

**NEW!**

**New Woodworking Equipment**

**NEW!**



Stonewood Dovetail Machine



Oliver 6" Jointer (Spiralhead Cutter)



Stonewood 24" Planer Spiralhead Cutter



Stonewood USA Face Frame Table



Nederman S1000 Dust Collector



Stonewood 24" Bandsaw



Oliver 10" Table Saw



Oliver 6"x89" Edge Sander



Oliver 4705 Shaper



SCM 10' Sliding Table Saw



CAT 600 HP Natural Gas



Waukesha F18GLD Natural Gas



Perkins 75HP Diesel



Remote Radiator



Schneider 26kVA 3Ph Transformer



Gardner Denver 40HP Compressor



CAT 3408 Natural Gas



2013 Atlas Copco Compressed Air System



Champion HRA15-12 Compressor

**Power Units;** Waukesha F18GLD 400 hp natural gas engine w/rebuilt heads; 6x8 remote radiator/cooler w/25 hp 3 ph. Motor, fits on Waukesha engine; Cat G3408 natural gas engine, 400 hp, w/Cat branded thick heads, rebuilt turbo and heads, made for remote radiator; Perkins 50 hp, 3 cyl. diesel engine w/clutch, 3700 hrs; VM 50 hp, 3 cyl. diesel engine w/clutch; Murphy D226 50 hp, 3 cyl. diesel engine w/clutch; Lister Petter 50 hp, 3 cyl. diesel engine; Duetz F3L101P 50 hp, 3 cyl. diesel engine; Lister LT2, 2 cyl. diesel engine, hand or electric start; Lister SR1 9 hp, diesel engine, hand or electric start; Hatz F780 10 hp, diesel engine; Kubota ZB600 18 hp, 2 cyl. diesel engine; Kubota D905 25 hp, diesel engine; Kubota D1105 25 hp, diesel engine, 1100 hrs; John Deere 6068 6 cyl. power unit w/clutch, 250 hrs. since rebuilt; Cat 600 hp natural gas power unit w/318 clutch, 5,000 hrs after rebuilt; Perkins 75 hp diesel w/clutch, 13,582 hrs; IR 20T2 20 hp air compres-

or; Detroit power unit w/clutch, 6 cyl., 71 series, 330 hp, shows 454 hrs, includes 35 KVA generator; Yoder Hydraulics hyd unit, 300 gallon tank, 26 GPM pump  
**Hydraulic Units;** Huge, Complete hydraulic system, tank, 10 pumps, 28 motors, lineshafts, coolers, etc., this unit powered a 25 employee woodshop, sells from the woodworking ring, includes; Oil gear MFQ-20A-AY 20 HP Hyd motor (on frame), Oilgear MFQ-20A-AY 20HP Hyd motor, Vickers 40 HP Hyd motor (on frame), 2 Oilgear MFQ-15A-AY Hyd motor, 7 Oilgear MFQ-06-AY piston Hyd motors, 2 Oilgear MFQ-10A AY piston Hyd motors, 14 Parker, Ultra, Dowty Hyd motors assorted, Ultra Gear Fixed Displacement pump 30 GPM, Ultra Gear Fixed Displacement pump 25 GPM, Continental Double pump 3525 V 45 GPM/25 GPM fixed, Vickers 45 GPM Vane pump fixed, Kawasaki 40 GPM piston pump pc, Bosch 60 GPM Vane pump pc, Bosch 72 GPM Vane pump pc, (piggy backed) Kawasaki 40GPM piston

pump pc /with Bosch 40GPM Vane pump pc, ext Hyd oil cooler 240 GPM, ext Hyd oil cooler 200 GPM; ; Hyd Unit w/2 pumps, 7.5 hp and 10 hp motors, vane type;  
**Compressors;** 2013 Atlas Copco compressor w/dryer, 7800 hrs, 15 hp, 3 phase; Champion HRA15-12, 15 hp air compressor, (R40A) 220v 3 ph; 1998 Gardner Denver EBH 99D11, 40 hp screw compressor, 58,093 hrs; Quincy 15 hp air compressor;  
**Generators;** Ingersol Rand 450 kw generator;  
**Phase Converters and Transformers;** Roto Phase HD 15, 15 hp rotary phase converter, 230 v, 1 phase to 3 phase; 2000 Schneider Electric pad mounted 3 ph. transformer, 1500 KVA, high voltage, 9700 lbs;  
**Misc;** Grayco model 3235 power washer w/11 hp Honda, 2 - 50 ft hoses.

## Metalworking Equipment Sells Mostly Saturday, Feb. 20th

Cincinnati 175CB, 10"x10' capacity, 175 ton press brake w/CNC auto gauge, 460v 3ph; HTC 500-10A HC, shears; Pexto 381D 22 ga. x 36" sheet metal roller; Pexto 30" foot shear; 3 ratchet hoists; Wright 3 ton chain hoist w/trolley; Dake arbor press; angle notcher; Chicago 8" size 4 hand brake; Atlas Famco arbor press; Flattening roll for sheet metal; No. 105 slitler; angle roll former; Bench model 16 ga. Punch machine; Rotary 16" machinist vise; Hot shrink tire shrinker; unusual buggly wrench; Tenon cutter; Steel buggly measuring wheel; Wall mount post drill; Kane & Roach large hub boring machine; Machine vise; 4 speed floor drill press, self feed; Ridgid 1" to 2" threading machine; Henry turning metal lathe w/3' cen-

ters, lineshaft ready w/clutch; Pedestal grinder w/2 stones, 3" x 16" & 2" x 7"; Dake #4 arbor press; Famco arbor press; Pyramid 5' sheet metal roller, rolls up to

5/16" thick to 5' wide material; Heavy duty wagon wheel roller, from 1/2" to 5" wide material; Hand crank buggly tire roller; Flywheel arbor press.

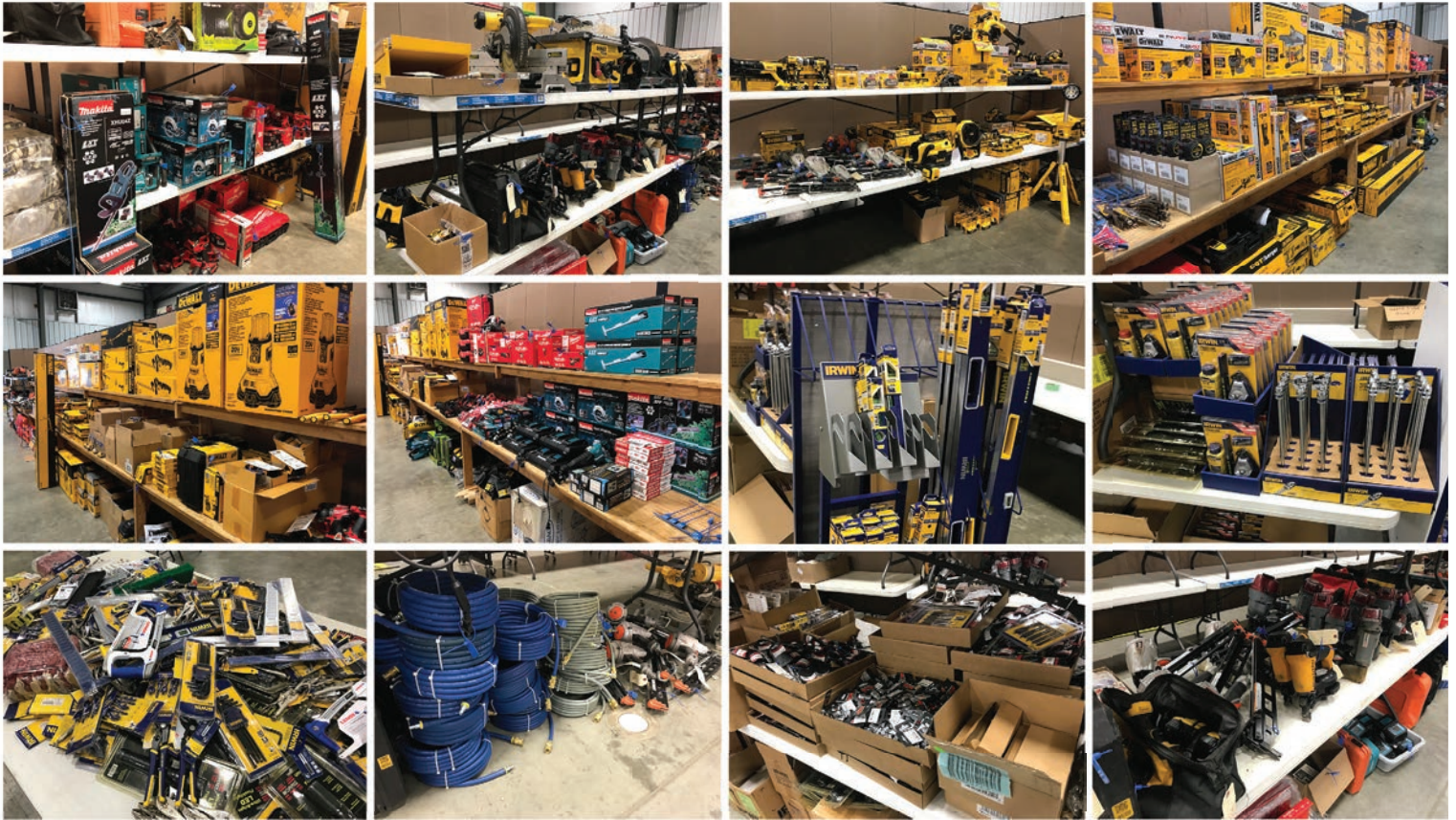


HTC 500-AHC Shears



Cincinnati 175 Ton Press Brake





**3 Semi Loads of New Tools;** Including brands like Irwin, Milwaukee, DeWalt, Makita, Snap On, Vise Grip, Diablo, Morse, Norton and others. Includes (all new) vise grips, chalk lines, chalk, C-clamps, vises, levels, socket sets, wrench sets, bar clamps, sandpaper, sanding belts, coolers, hole saws, cordless drills, floor jacks, hand saws, hole saws, pliers, helmets, router bits, welding wire, reflective safety coats, drill bits, saw blades, cement blades, caution flags, bandsaw blades and much more. This consignment comes from a Distribution Warehouse Liquidation. We will sell this stuff individually and in bulk lots

**3 - Sessions of Brand New DeWalt, Milwaukee & Makita Tools:** We will have another very nice line-up of DeWalt cordless power tools to sell including

some of the latest and greatest models and tools that DeWalt has to offer with all warranties intact. We will also have lots of new Milwaukee and Makita tools to sell in these sessions as well. \$100,000.00+ of new tools

**New Sioux Air Tools:** Another nice consignment of Sioux Tools including new tools, demos & salesmen's samples, of grinders, sanders, drills, riveters, chisels, impact wrenches, impact drivers, screwdrivers and more.



### Complete Flooring Company Liquidation (to sell in woodworking rings)



# 32nd Annual Air Works Consignment

Eli Troyer, Auctioneer/Manager

330.317.9259

eli@airworksauktion.com

AirWorksAuction.com

# AUCTION

\*Antique & Collectibles Division\*

proxibid

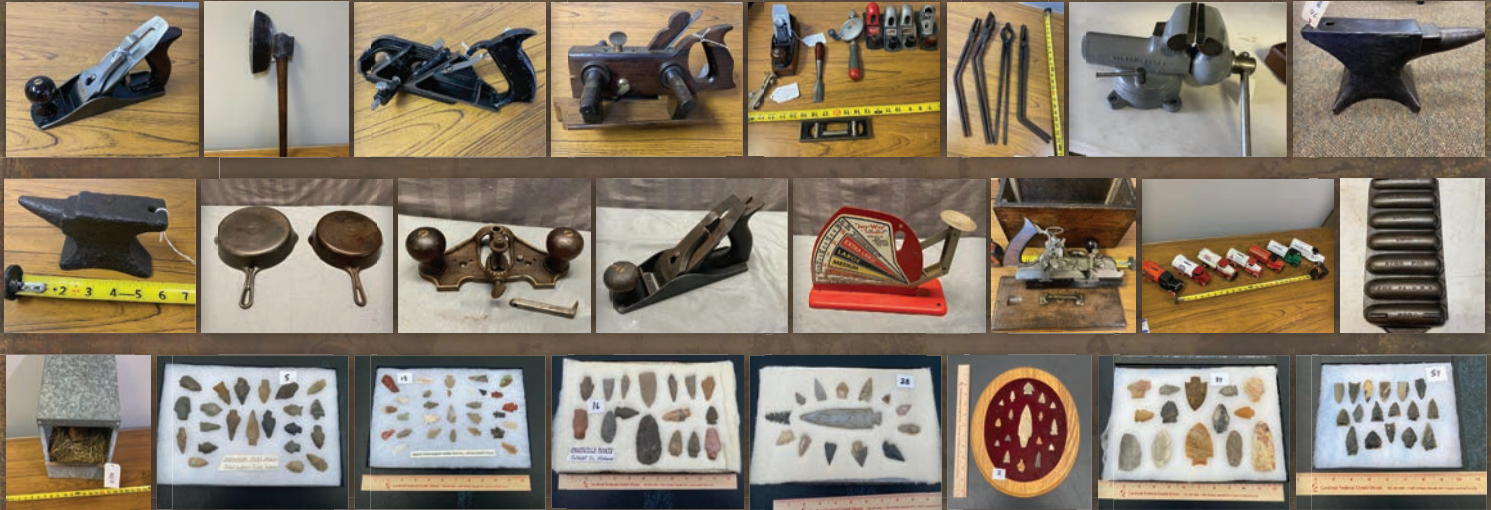
AuctionZip

ID #40052

Thurs. Feb. 18th Through Sat, Feb. 20th at 8:00 AM with 2 Crews  
Mt Hope Auction Grounds GPS Location: 8076 SR 241 Millersburg OH 44654

Antique & User Tools \* Blacksmithing \* Cast Iron Collection \* Butchering \* Book Collection Gun Collections \* Salesman Samples \* Collectible Toys \* Antiques \* Collectibles \* Primitives

## THURSDAY, FEBRUARY 18



### Thursday, February 18 | 9:00 A.M., Ring 2 | Antique Tools, Misc. Collectibles & Cast Iron

**Antique Tools** | Large Selection of Hand Planes, included approx. 75 hand planes including 45 Stanley (sizes 1-8 and many specialty sizes 113,148, 78 Match among others), Millers Falls, and more. Also included in this great lineup, Blacksmithing Tools (Approx 10 various size Anvils, Tongs, Hammers, Boxcar Anvil), Stanley No. 55 Combination planes, Block Planes, Rabbit Planes, Surveyors Tools, Buggy Wrench, Yankee Screwdrivers, Stencils, Broad and Goosewing Axes, Camp Hatchets, Braces and Breast Drills, Plow Planes, Large Moulding Plane Collection, Several Flat lots of Hammers, Chisels, Wilton Vise, Gerstner Model 031C Tool Chest, Gyro Vise, Stanley 45, Stanley 888 Walnut Tool box, Braces and Auger bits, Stanley Routers, Barn Beam Drill, Stanley Jobmaster Axe, Millers Falls Bullnose, Hand Forged Fros, Hay Trolleys, Farm Wrenches, Calipers, Drawknives, Pulleys, Milk Tester, Bull Lead, Lab Scale. Over 600 lots of quality antique tools.

**Cast Iron** | Glue Pots, Griswold No 3 Slant Logo, among many other Griswold and Wagner Skillets, Victor Cast Iron Skillet, Star Tobacco Cutter, Tractor Seats, and more. **Misc Collectibles** | Approx 80 lots of Native American Artifacts, Miniature Items, Jiffy Way Egg Scale, Diecast Truck banks, Nesting Box, Case XX knives, several other knives.



### Thursday, February 18 | 9:30 A.M., Ring 3 | Uncataloged Antiques, Collectibles, Primitives

This uncatalogued session will feature approx. 1000 lots Antiques, Collectibles & Primitives including Antique Tools, Books, Blacksmith Items, Anvils, Butcher Items, Railroad Items, Primitives, Hay Trolleys, Agriculture Related Items. It is hard to tell what all will show up in this ring since it features most of our late arrival antiques.



# 32nd Annual Air Works Consignment Auction

Thurs. Feb. 18th Through Sat, Feb. 20th at 8:00 AM with 2 Crews  
Mt Hope Auction Grounds GPS Location: 8076 SR 241 Millersburg OH 44654

## FRIDAY, FEBRUARY 19



### Friday, February 19 | 8:03 A.M., Ring 2 | Antique Tools \* Cast Iron \* Blacksmithing \* Model Engines \* Salesman Samples & Miniatures \* Bells & Steam Whistles

**8:30 AM** | Large selection of user tools. Corn sheller collection, hay trolleys, pulleys, flats & crates full of tools. Winchester, Keenkutter items. We will be selling fast with some huge dealer group lots

**9:00 AM** | Cast iron session approx. 500 pcs. selling in 350 lots. Griswold, Erie, Wapak, Wagner, etc. This features only the select top pieces picked from an over 2,000 pc collection. To list all the highlights would be impossible. A few are Erie Spider Logo, (2) #2 Griswolds, (2) #13, (3) #20, several #14. 3 with lids. #13 and #14 skillet lids, set of Dutch ovens, Roasters, Scotch bowl set, #13 Dutch oven w/ lid and trivet. Huge selection of waffle makers, griddles, and molds. More rare pieces than ever before.

**2:00 PM** | Black Smith and Tool Session. Anvils, forges, tongs, hammers, hardies, 50+ vices, Rare Collector pieces, Heller, champion, Cat's Eye Hammers, miniature anvil collection. Good selection of collector and user pieces.

**4:30 PM** | Salesman Samples, models, watch collection, bells, whistles, etc. Samples to feature the Pennel collection, including case mower, grain binder, cultivator plows, Buck rake, Hog oilers, stoves, silo, baler, military tent, and many more great samples. More good samples and miniatures than ever before. 80+ watches. Best set of collectors watches ever offered in this area, maybe anywhere. 12 in original boxes, including a 23J Bunn, 992 E etc. Rare, 922 Masterpiece 23J 185 in gold case, Ball Hamilton 999 Brotherhood of Railroad, Seth Thomas Maiden Lane 25J. 10 salesman sample watches including Bunn 23J, Elgin Vertigas, 23J wind indicator, Ball Hamilton 999N 23J. To list all the rare pieces, would require a lot more room. This is the Holy Grail of watch collections. A complete list will be on website or call or write for a list.

**For specific questions regarding Cast Iron, Blacksmithing, Salesman Samples or Watches selling in Ring 3 contact Marvin Yoder directly at 740-502-9825.**



### Friday, February 19 | 9:00 A.M., Ring 3 | Misc. Antiques & E&M Rare Book Collection

Will start with misc. uncatalogued antiques and collectibles. Uncatalogued books begin selling at around 12:00 Noon including a rare 1691 German Seelen Schaab book, lot's of Horatio Alger, Louis L'amour books and many others. E & M Rare Book Collection - Catalogued Sale @ 1:00 P.M. 1000's of books, a few highlights include a 1776 Christopher Saur German Bible, along with additional 1700s German books, The first English edition 1837 Martyr's Mirror by David Miller, 1785 German Ausband, Martin Luther books, one lot of 170 children's books, Numerous Family Life, Young Companion, Ambassador of Peace and very rare 1950's editions of the Canadian Whistle, 3 lot's of Jonathan Fisher books. There will also be many group lots of Westerns, Zane Grey comic books, Horatio Alger, juvenile books and others. Readers Digests, lots of Amish books. Also, have books and magazines on Farming, John Deere, Farm Mechanics, Steam books, Hunting, Disasters, Titanic, Pearl Harbor along with many Civil War, Abe Lincoln, Hitler, James Herriott, Norman Rockwell etc. Many others. Call or Write for a Book Catalog | 1.888.209.3185 Airworks Book Auction 420 Weaver Road | Millersburg, PA 17061

# 32nd Annual Air Works Consignment Auction

Thurs. Feb. 18th Through Sat, Feb. 20th at 8:00 AM with 2 Crews  
Mt Hope Auction Grounds GPS Location: 8076 SR 241 Millersburg OH 44654

A 3rd collection of  
120 guns selling on  
Sat., Feb. 20th  
@ 9:00 AM)

## SATURDAY, FEBRUARY 20



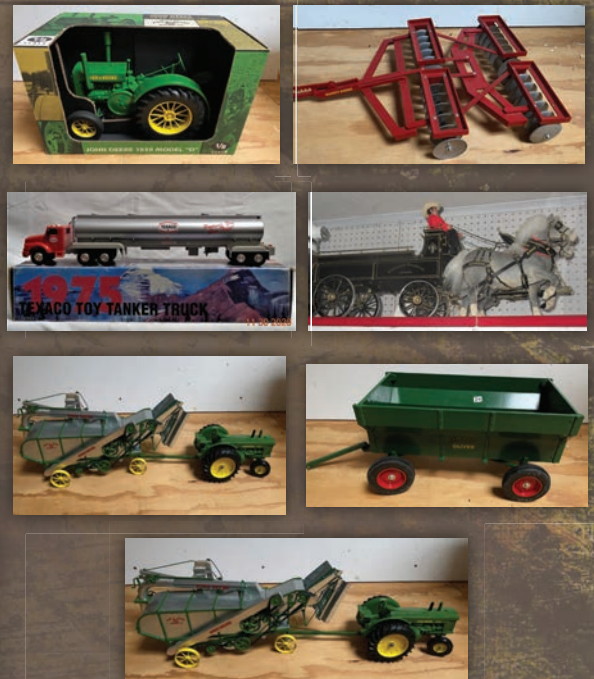
### Sat., Feb. 15 | 8:30 A.M., Ring 2 | Butchering Items \* Pocket Watches & Clocks \* User & Collector Tools

Approx. 80 watches, clocks, butcher tools kettles, slicers, stuffers, grinders, huge pile forks, axes, Yankees, Breast drills, huge selection of user tools and collector tools. There will be dealer lots.



### Saturday, February 15 | 8:30 A.M., Ring 3 Collectible Toys & 100+ Private Clock Collection

We are excited to be offering this collection of antique clocks, highlighting a one owner collection, featuring over 100 clocks, most in good running condition, including 25+ Cuckoo clocks, Ogee clocks, Mantle clocks, Ginger Bread clocks and more. A few highlights include 1830's Skeleton clock, 1770's Large frame all wood gear clock, Late 1800's Ogee 30 hour clock, Sessions nautical banjo clock, Banjo clocks, Black Forest Cuckoo, Railroad Station clocks, Calendar clocks and more. Online bidding will be available on this session. Toys sell after Clocks: Threshing Machines: John Deere and McCormic Deering; Horse Drawn Toys: McCormic Deering corn binder, McCormic Deering hay mower, John Deer Cultivator, Bob sled with horses, Fore cart with horses, Hay wagon, 1/16 scale Tractors, Case 500, John Deere R, John Deere 830, 1/8 scale Tractors, John Deere D, John Deere A, Discs, Wagons.... & lots more! 1867 Adriance Platt & Co 5' harvest reaper; 1917 John Deere hay press; John Deere 2 horse circle horse power, very old; 1868 Adrian's Platt reaper, cut 2 acres of grain in 2014, works good; Early 1700's Conastoga wagon sideboards; 1994 Sunoco toy semi, tanker w/lights & sound, in box; 1995 Texaco toy semi, tanker w/lights & sound, in box; BP Oil, toy semi, tanker w/lights & sound, in box; Hit & Miss Engines



**Auction Information:** For complete and updated auction details, catalogs & photo's as well as online bidding links please visit [www.airworksauktion.com](http://www.airworksauktion.com) or visit [auctionzip.com](http://auctionzip.com) auction ID 40052. Request full auction listings and catalogs from the Air Works Auction Office at 330.749.4362.

## (2) PUBLIC GUN AUCTIONS (2) 1-OWNER COLLECTIONS, SELLING SAME DAY

FRIDAY, FEBRUARY 19TH 2021. STARTING @ 8:45 A.M. SHARP

Location: Mt. Hope Auct/Sale Barn, 8076 SR 241 Millersburg, OH (When Airworks Auction)

Collection (1), 175 Guns, 30+Knives @ 8:45 am



Winchester mod. 42 Pigeon Grade (Rare!)

LeFever Grade C SxS 16ga (Rare!)

Browning 12ga Pheasants Forever #64 of 100 | Brownings mod. 12 Grd. V 20 & 28 ga. | Rem. 1100's LT-20 Skeets

**SOME OF THE HIGHLIGHTS INCL: WINCHESTER SHOTGUNS**, (2)Pigeon Grades mod. 42 and mod. 12, both Very Rare; (3) more mod. 42's; mod. 101 Trap O/U 12 ga; **(39)WINCHESTER RIFLES**: (30) Mod. 1894 & 94 Comm. All but few New In Box; 2 Oliver F. Win.; John Wayne; Cowboy; Wild Bill Hickok 1 of 350; 2 US Calvary #104 & 107 of 300; American Whitetails #207 of 300; Audie Murphy 24K Gold #196 of 300; 2 Clayton Moore #65 of 300; Roy Rogers #43 of 300; US Border Patrol 1 of 1000; Int. Ass. Mach. 1 of 3000; Alberta & Saskatchewan Diamond Jubilee 1 of 2700; ILL. Seq.; Theodore Roosevelt; Golden Spike; Boy Scouts of America; 3 Lone Stars; 2 Cherokee; 2 Legendary Lawmen & Frontiersmen; 2 Canadian Cent.; **MORE WIN. RIFLES**: mod. 1906 22cal.; mod. 61 22cal.; mod. 62 22cal.; mod. 1904 22cal.; mod. 70 Trademark 270cal.w/Leopold Scope; mod. 70 SA 308cal. w/ Leopold Scope. **(25)REMINGTON'S**: (11) mod.1100's (2) LT-20 Sporting NIB; (2) Sporting 28ga VR; (2)LT-20 Skeet; Classic Trap 12ga NIB; LT-20 Sam Walton Ed; 1100 410ga VR; mod 870 Wingmasters: 410ga NIB; Deer Hunters Tribute 12ga #82 of 300 NIHC; TB 12ga. Trap; and more; Spartan by Rem. 223 over 12; mod 700 243cal w/Scope NIB; mod 7600 308cal w/Scope; mod 742 30-06 w/Scope; **(41)RUGERS: GREAT LINE OF (RUGER MOD. 10-22 COMM.)**; Ashland Cty. Trump Gun 1 of 1; Harrison Cty. Trump Gun 1 of 1; (8) Ohio Trump Guns #15/16/19/33/36/37/41/42 of only 45 made; (2) Cattle Drive Ed; (4)American Farmer Ed;(5) Gator Ed; (3)Wild Hog Ed;(3)Eagle Ed;(2)Tiger Ed;(2)Boy Scout Ed; Shark Ed; Bass Ed; **MORE RUGERS**: (3) .450 Bushmasters; Super Red Hawk 44mag Revolver; 9mm semi-auto handgun; and more. **(16)HENRYS**:(4) Golden Boy 1st Responders Ed. #4/5/6/7 of only 10 made; American Beauty Ed 14K Gold; Free Masons Ed. 24K Gold; Evil Roy Ed; Philmont Ed; EMS Ed; Ducks Unlimited Ed; NRA Ed 410ga; Break Action, Brass 410ga; and a few more Golden Boys, all Henry's are New in Box! **(2)LEFEVER**: 1 mod. Grade C 16ga SxS w/Leather Case, Nice Cond. Extremely Rare! 1 mod. Nitro Special 20ga SxS. **(9)COLTS**: All New in Box (5) Single Action Revolvers, Frontier Scout, Wild Bill Hickok & Bat Masterson Eds. Both 1 of 3000; (2) 49er Miner both 1 of 500; Army, Buffalo Bill 1 of 500; (4) Blackpowder Cap. & Ball Revolvers, 1st Dragoon/2nd Dragoon/3rd Dragoon, all .44cals; 1- 1860 Army 44cal. **(8) BROWNING'S**: Pheasants Forever 12ga Fancy, NIHC; mod. 725 Citori 12ga O/U, NIB; Citori 20ga O/U; BT-99 12ga; A-5 Magnum 20ga; (2)mod. 12's Grade V 28ga & 20ga NIB; BL-22 NIB. **MARLIN**: (3) mod. 444's NIB; mod. 1895 45-70cal w/Leopold Scope; mod. 336 30-30cal. **SAVAGE**: 2 mod 24's 22mag over 20ga; 2 mod 110's 243cal & 223cal w/Scopes; mod Axis 350 Legend NIB; mod 220 20ga w/Scope; **BENELLI** Super Black Eagle 12ga; **KIMBER** mod 8400 300win mag w/Scope; **SAKO** mod. 75-Hunter 300win mag w/Scope; **T/C** Compass 7mm-08 NIB & 7mm NIB; Hawkins 50cal 25th Annv.; **SMITH&WESSON** Victory SW-22 Handgun; **TAURUS** Judge 45colt or 410ga NIB; **JIMENEZ** 9mm handgun; and more not listed. For more info or pics, go to [www.auctionzip.com](http://www.auctionzip.com), Auctioneers I-D # 32963



## Collection (2), 185 Guns & Misc. Starting Approx. 12:30 pm

**(13) WIN SHOT GUNS** Mo. 42 410ga donut post VR SS# 38598 Jewel auction Mint cond.; Mo. 42 410 ga. W/ Donut & Shadeline Vr; Mo. 42 410 3" full choke S#150081; Mo. 9410 410 NIB; Mo 1897 12 ga mint cond. SS# 406200; Mo. 1200 20 Ga; Mo. 120 12 Ga; Mo. 9410 410 Ga. NIB; Mo 12 16 Ga SS# 913710 Mfg. yr. 1942 very clean; Mo. 50 12 ga. W/ box Plus Shipping Box; mo. 1400 12 ga. Vr; Mo. 97 16 Ga; Mo. 97 16 Ga; Mo. 9410 410 ga NIB;

**(30) REM SHOTGUNS** Mo. 1100 Sporting 410 ga 27" VR NIB Extra Chokes: Mo. 1100 12 Ga. 50th Annv. Ed. NIB W/ Green Hard case ; Mo. 1100 LT 20 Ga Tournament Skeet NIB VR: Mo. 31 20 ga. Slide Action Mfg. 1931-49; Mo. 870 Wing Master 12 Ga VR; mo. 870 Wing Mater 12 Ga w/ slug barrel; Mo. 870 wing master 16 ga Mfg. yr. 1956 Good cond.; wing master 16 Ga: Mo. 1100 20 ga LT Special Vr w/ Field and slug Barrel; Mo. 870 wing master 12 Ga ; Mo. 11 12 Ga; Mo. 870 Wing Master 16 Ga Sliver spoon; Mo. 1100 12 ga 2 1/4 in; Mo. 1187 12 ga VR; Mo. 1100 410 Ga Vr Nib; Mo 870 wing master 410 Ga VR NIB; Mo 870LW wing master 20 Ga mag w/ slug barrel; mo. 870 Wing master 12 ga VR w/ Silver Receiver; Mo. 1100 12 ga; Mo. 11-48 12 ga; Mo. 870 wing master 12 ga VR: Mo. 870 wing master 12 Silver spoon : Mo. 29-248 12 Ga: Mo 870 wing master 12Ga Vr; mo. 870 wing Master 12 Ga 200th Annv. NIB very Fancy; Mo. 1100 LW 410 Ga Vr Good cond.; Mo 870 wing Master 16 Ga VR Silver spoon; Mo. 1100 12 ga Slug Barrel ; Mo. 870 wing master 12 Ga silver spoon; Mo. 870 Wing Master 28 ga Vr silver spoon : Mo. 10 12 Ga 1903 to 1905; Mo. Mohawk 48 12 Ga;

**(56) WIN RIFLES** (43) mo. 94 23-35 cal Trail End Hunter NIB; Mo. 94 45 Colt Cal/ Trails End Oct. Barrel; Mo. 94 Legacy 44 Rem Mag/ 44 SW cal NIB; mo. 94 AE 45 colt Cal NIB ; Mo. 94 150TH Yr Trails End 44 rem mag Cal NIB ; Mo. 94 XTR 375 cal. NIB; Mo 94XTR 22LR cal NIB; Mo 94 38-55 cal Alberta Diamond Jubilee Com NIB w/ Hard Case ; Mo. 94 38-55 Cal Saskatchewan Diamond Jubilee com NIB Hard case; mo. 94 Xtr Big Bore 375 cal. NIB; Mo. 94 450 cal Nib; mo. 94- 22 cal Legacy NIB; Win Mo. 94 357 mag Trapper Ed. Nib; Mo 94 44 rem Mag case color Receiver Oct barrel Nib; Mo. 94TS 45 colt cal 150th Annv. Trails End oct barrel NIB; Mo. 94 Trails end 357 cal. Case color Receiver oct Barrel NIB; Mo. 94 22 Rim Fire 25th Annv. NIB; Mo. 94 Legacy 38-55 cal. Case color NIB; Mo. 94 Ranger 30-30 cal NIB; 2 Mo. 94-22 22-win mag cal; Mo. 94 38-55 center fire Trail End Hunter NIB ; Mo 94 30-30 W/ saddle ring; Mo 94 450 Cal Trail end ; 2 mo. 94 30-30 cal Great Western Artists 1st & 2nd Ed.; Mo. 1894 25-20 Cal Duck Unlimited Good Cond; mo. 94 30-30 Wells Fargo Co. Comm Like new no box; MO. 94 38-55 Trail end Ed.NIB; Mo. 94 357 Mag Oct Barrel Case color NIB; Mo. 94 Legacy 45 Colt Cal; Mo. 94 TS 150th Trails End Ed. 45 colt cal NIB Rare 1 of 150; Mo. 94 30-30 Cal Conservation Officer Ed. NIB; 2 Mo. 70 243 and 223 win cal heavy varmint Barrel NIB ; Mo. 1890 22 cal Engraved receiver ; mo. 1890 22 cal Oct Barrel SS# 814001; Mo. 61 22 cal SS#251619 Mfg. 1957 W/ Original hang tag; mo. 62A 22 cal Mfg. 1957 Good cont.; mo. 61 22 Cal W / weaver Scope SS# 278359; Mo 77 22 cal semi auto w/ weaver scope; Mo.?? 22 Cal SS Oct Barrel Peep Sight; Mo. 63 22 Cal. Auto load; mo. 67 22 Cal bolt action; mo. 490 22 cal 2 clips NIB; Mo 9422 XTR 22 Cal; Mo. 67 22 Cal; Mo. 9417 HMR 17 cal NIB; **(12) REM RIFLES**; mo. 121 SB Field Master Routledge 22 LR shot cartridge Very rare; Mo. 760 6MM cal w/ Bushnell scope; Mo. 121 Field Master 22 Cal good cond.; Mo. 7600 22 cal NIB; Mo. 12- C 22 LR Cal; mo. 722 222 Cal w/scope; Mo. 34 22 cal; mo. 7600 243 Cal w/scope; Mo. 12- A 22 cal Adj rear Sight; Mo. 4 22 Cal; Mo. 572 Field master 22 cal Like new; Mo. 700 30.06 W/ scope and sling; **(14) HENRYS** Gold Boy 22 Cal American Farmer NIB; Golden Boy Fireman Tribute 22 LR cal Nib; Golden Boy 22 Mag Cal. NIB; Sliver Boy 17 Hmr cal.; Mo. Ho10cc 45-70 Govt Cal Case Harden receiver W/ Oct Barrel NIB; Big boy 357 mag Oct barrel; Gold Boy 45 colt Cal. Oct barrel New; Cowboy carbine 38-55 cal NIB; Brass oct 30-30 Cal. NIB; Varmint 17 HMR Cal Nib; Gold Boy 22 LR cal NIB; Golden Boy Youth 22 cal NIB; Golden Boy 45 colt cal Like new w/ red dot scope; **(14) MARLINS** Mo. 1894c 357 Mag Nib; Mo. 1894 44 Mag NIB; Mo. 444 444 cal; Mo. 25 M 22 Mag Cal. w/ scope and sling; Mo. 780 22 cal. Micro grove barrel no clip; Mo. 2035 22 cal w/scope; Mo. 30 AW 30-30 cal Miro grove barrel w/ scope; Glen Field Mo. 25 22 Cal; Mo. 39 A 22 cal W/ scope; Mo. 25mm 22 cal W/ scope; Mo. 55 12 ga Original Goose gun; Mo. 512 Slug master 12 ga w/scope; **BROWNING'S** Lighting O/U 12 Ga VR Round Knob Belgian Made; mo. BLR 308 win cal W/ scope; Bolt action 7 Rem Cal w/scope; Mo. BPS Field 20 Ga Vr engraved Receiver; Mo BPS Field 12 Ga Vr Gold Trigger; BPS field mo., 20 ga 3in Mag NIB; mo. Lever action 22 Cal; A Bolt Medallion 7mm Rem cal w/ scope rings embellished Like new; **RUGER** mo. 10-22 Donald Trump " Drain the swamp" NIB; **ITHACA** Mo. 37 16 ga. Engraved; Mo. 37 12 ga; Mo. 51 Feather light 12 Ga; **STEVENS** Mo. 31 410 Ga SxS double Barrel; Mo. Single shot 16 ga; **REVOLVER AND HAND GUNS** Smith & Wesson Mo. 500 Mag 500 Cal SS Revolver Like new in case; Sig Sauer hand gun 45 auto 2 clips w. hard case; Smith & Wesson Mo. MP40 Shield 40SW cal W/case Extra clip; Walther Hand gun Mo. P99QA 9mm cal w/ case and 2 clips ; Colt Anaconda 44 Mag Revolver w/ scope and hard case; Ruger mo. New model single 6 22 cal Rev in hard case NIB; Ruger mo. MK2 22 cal hand gun Extra clip Rare 50 Yr. annv; Heritage Rough Rider 22 cal like new ; Ruger mo. Single 6 22 cal rev w/ holster; Geroco mo. 21 22 cal rev in holster; Smith & Wesson 38 special Ctg 38 Cal Rev;

**AUCTION TERMS:** A 5% buyers premium will apply to all sales. Must be 18 yrs. Of age to buy long guns, and 21 yrs. Of age for handguns.

**OHIO RESIDENTS,** No background paperwork needed.

**NON-OHIO RESIDENTS,** Must provide Picture I-D and complete background paperwork with \$20 transfer fee at Premier Outdoors "Gun Shop in Mt. Hope"

**METHOD OF PAYMENT:** Cash, Check or Credit Card with an additional 4% premium, waived with Cash or Check.

**SALE ORDER:** Starting at 8:45 am with Collector Knives, Guns starting 9:00 am with Collection -1, followed by Collection -2 approx. 12:30 pm.

**GUN PREVIEW:** Guns will be setup for preview Thursday afternoon from 4:00 to 7:00 pm. And Friday morning from 7:00 to 8:30 am

**AUCTIONEERS:** For Collection-1 Nelson Weaver 330-763-4855

**AUCTIONEERS:** For Collection-2 David Miller 330-473-3430

**ASSISTING AUCTIONEER:** Daniel Weaver 330-231-8865

**FOR MORE INFO OR PICS, GO TO**

[www.auctionzip.com](http://www.auctionzip.com), Auctioneers I-D # 32963



# Mt. Hope SHOWCASE

Mt. Hope Event Center  
Adjoining the Auction Grounds

## 2021 FEBRUARY

### Showcase Hours

Thursday February 18, 10AM – 7PM  
Friday February 19, 7AM – 7 PM  
Saturday February 20, 7AM – 1PM



*In accordance with local COVID-19 orders, all food will be sold at outside food vendor trailers. No food served indoors.*

## 2021 VENDORS

3K Machinery	Finishline Fencing	Quality Sips
AISECO	Finish Works	Rapid Start
A + M Gutter Guard	Flack Hill Machine	Reiff Metal Fab
A + M Kiln Dry	Frank Miller Lumber Co.	Rockwood Door + Millwork
Accessa	Gehman Accounting	R & S Sheet Metal LLC
Air Works, Ltd.	Georgetown Hydraulics	RT Machine
AloNovus	Georgetown Sales	SALT Microfinance Solutions
Anabaptist Financial	Glass Specialties	SE Drive Shafts
Apple Outdoor Supply	Green Fast Cure	Scarlett Machinery
Arthur Distribution Company	H + M Stauffer	Scenic View Engine
B Sharp	Hamilton Tool Supply	Schwartz Welding
Bad Dog Tools	Hentzen Coatings	Showcase Equipment
Beechy Buggy Shop	Hermance Machine	Shur Ply
BDH Belts	Hershberger Hardware	Smith Sawmill Service
Bevanda	Hershey Machine	Source 3 Media
Bentwood Solutions	Hershberger Mfg.	Sparta Steel Equipment
Berlin Sign Co.	Holmes Fire + Safety	Spray Foam Solutions
Black and White Leasing	Holmes Lumber	Stewardship Resources
BluFlame Heaters LLC	Holmes Power Equipment	Stoll Brothers
Buckeye Hardware Dist.	Honeyville Metal Inc	Stoll Brothers Steel Buildings
Buck Hollow Woodcraft	Hoover Pump Works	Sun Lite Enterprises
Busy Beaver Publications	Hopeview Buggy	Tech Bond
C & A Design	Hunting Consultants Unlimited	The Budget
Calmoutier Dry Kiln	Industrial Parts and Service	Timberlane Finishing Solutions
Cardinal Hollow Repair	Interstate Fleets Inc	Think Ink
Century Components	Inkscape Printing	TNT Welding
Classical Construction	Iron Bull MFG	Trail Battery
Conklin	JC Manufacturing	Troyer Machine
Creative Power Solutions	JD Coatings	Troyer Wholesale
CutCo	JR Heating	Top Choice Roofing
Custom Wood Products	Keim Lumber	Unicus Spray Systems
D A Hochstetler	Lancaster Showcase	United Fencing
D & D Sawmill Service	Lapp Millwright	Unlimited Products of Lancaster
Daystar Systems	Lewis and Hockenberry Inc	Valleyview Wood Turning
DES ECK Welding	Mann Fluid Power	Weaver's Magneto Repair
Die Botschaft	Masterpiece Metal Roofing	Weaver Metalworking
Dimensions In Tooling Distributor Service Inc (DSI)	Maysville Harness Shop	Whitetail Properties Real Estate
Double R Sharpening	Midwest Machinery + Automation	Williams Toyota Lift
DJM Sales	Midwest Sharpening	Winesburg Lawn & Garden / Charm Engine
DJS Welding	MillerTech Energy Solutions	Woodwork Productions
DryCo Lumber	Miller Sales	Woodwright
DYNA Products	Mt. Eaton Engine Shop	Yoder Feeders
DW Bands	New Fab Enterprises	Yoder Sharpening
E + B Enterprises	Paint Valley Steel Wheels	Yoder Hydraulics
E+Z Boardwalk	Pioneer Carriage	Yoder Lumber
Eagle Machinery + Supply Inc	Pioneer Equipment	Yoder Service Supply
East Coast Drywall	Plain Communities Business Exchange	
Farmer's Equipment Repair	Precision Power	
	Open Hands	
	Oregon Ag LLC	
	Quality Plastics	



# Automatic Washing Machines

## Solar Powered Automatic 24 volt DC Washer Ideal for off grid homes

- Operates on 24 Volt DC power.
- 3.3 cubic feet of space in drum.
- Bleach and fabric softener dispensers.
- Gentle power agitator reduces wear and tear.
- 3 water and temperature settings.
- 710 RPM spin speed removes more water to reduce drying time.
- 1-340 watt panel and 2 batteries provides approximately 12 loads without charging with sunshine.



**NEW..**  
Washer can also be powered with cordless tool batteries. 2-12AH can do 3-4 loads of laundry per charge.

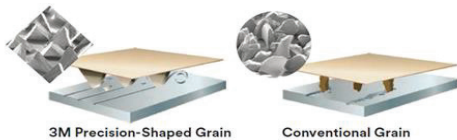
## Air Powered Automatic Washer Operates entirely on air pressure

- Operates entirely on 45 - 60 lbs. air pressure, no other power source.
- 3.3 cubic feet of space in drum.
- Automatic cold rinse standard.
- Bleach and fabric softener dispensers.
- Rotary controls make it simple to set cycles.
- 3 water temperature settings.
- 710 RPM spin speed removes more water to reduce drying time.



Fisher Manufacturing • Narvon, PA • 717.768.0155  
Call for a dealer in your area, Dealer inquiries welcome.

If you've discovered how well **3M's 775L** works...



Order **384F** Wide Belts



800-446-2467 (FAX: 330-456-0114)  
sales@jamindustrialsupply.com

**Timeless**  
**FENCEsystem**  
 *Proudly Made in the U.S.A.*   
this Post **is** the Insulator!

Call us to receive your **FREE** Samples

Voted THE #1 Electric Fence Solution Since 2011



- Self-Insulating
- Never rusts or rots!
- Pre-drilled every 3"
- NRCS EQIP Approved
- Organic Approved

Let us show you how affordable rigid PVC posts are when compared to other types of posts.



timelessfencesystem.com  
(800) 788-4709

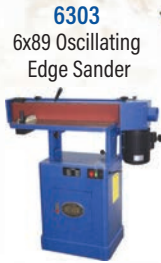
**Pre-Buy a Show Booth Machine and Receive Special "Early Bird Deals"...**

*The leading brands from the leading industrial woodworking equipment experts!*



Best Seller!

**5385**  
37" Wide Belt Sander



**6303**  
6x89 Oscillating Edge Sander



**6305**  
Tilting Edge Sander



**6310**  
6x108 Oscillating Edge Sander



**6315**  
9"x138" Oscillating Edge Sander

**6910**  
Oscillating Spindle Sander



**Professional Table Saws**



**4016 10"**

**10040 10"**



**4045 12"**



**4060 16"**

**10014**  
15" Planer w/Helical Cutterhead



**4430**  
20" Planer w/Helical Cutterhead



**4225**  
6" Parallelogram Jointer w/4-Sided Insert Helical Cutterhead



**4705** Shaper



*Huge selection of Oliver Woodworking Machinery!*

**10047** Shaper



**4235 8"**



**4265 12"**



**10061**  
14" Swing Floor Model Drill Press



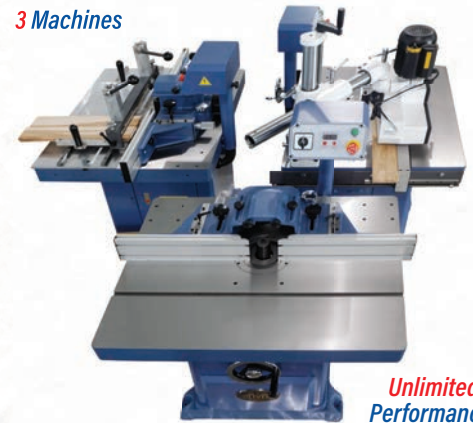
**10062**  
17" Swing Floor Model Drill Press



**10063**  
22" Swing Floor Model Drill Press

**\*\*Complete Door System\*\***

**3 Machines**



*Unlimited Performance!*



**LM116**  
Lock Miter



*Super Fast Quick Change Spindle!*

Power Options  
230V/460V  
Hydraulic Lineshaft

*Discounts not available on Circle T machines.*



**C117**  
Coping Machine

**The Most Accurate & Precise Cutting Saw on the Market**



The Saw Blade is **GUARDED** at All Times for Ultimate **SAFETY**

*30% Faster Than a Sliding Table Saw*

**The #1 selling indoor dust collection system!**  
*Heat stays indoors... saves you money!*

No outside noise  
Keeps shop super clean  
9", 12" & 16" blower inlets  
Easy-to-change bags or dump bin  
99% efficient seamless Super Bag filter



**S-500**  
Indoor Dust Collector



**S-750**  
Indoor Dust Collector



**S-1000**  
Indoor Dust Collector





Save Big!

Mt. Hope Showcase - February 18th, 19th & 20th

**AW** INDUSTRIAL WOODWORKING EQUIPMENT  
**Machinery**  
330.778.0020

...(1) \$100 Cash at Show, (2) Extra 5% Discount, (3) Free Machine Shipping to Show and (4) A Special Bag of AW Goodies, Including AW Coffee Tumblers

**SBW-4300H**  
17" Bandsaw



**SBW-5300H**  
20" Bandsaw



**ST-20 (ST-24)**  
ST Series Heavy Duty Planer



Shear Spiral Cutterhead!

**STC-630 (STC-760)**  
STC Series Heavy Duty Planer



Shear Spiral Cutterhead!

**STF-630 (STF-760)**  
STF Series Heavy Duty Planer



**EL-610**  
Double Surface Planer



Power Options  
230V/460V  
Hydraulic  
Lineshaft



NEW!

**STO-2005**  
Face Frame Table

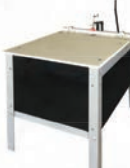
**S200**  
200 Series Wide Belt Planer/Sander



**C1-K1**  
Automatic Twin Table Round End Tenoner



**STO-2005 (Air)**  
**STO-2006 (L/S)**  
Pocket Hole Cutter



**JDT 65**  
Manual Dovetailer



**JDT 75**  
Automatic Dovetailer



**STO-16**  
13-Spindle Line Bore

**STO-21P**  
23-Spindle Pneumatic Line Bore



**CS M14/M18 (14/18)**  
Lineshaft Mechanical Cut-Off Saw



Left Right

**DMC SD 30**  
Wide Belt Sander



**DMC SD 30 RCS135**  
53" 2-Head Wide Belt Sander



**DMC SD 30 KRCS110**  
43" 3-Head Wide Belt Planer/Sander



**Minimax SC 4C**  
Circular Saw w/Tilting Blade



**Nova SI 400**  
Sliding Table Saw



Best Seller!\*

\*Excluding Northern Indiana

**MiniMax SC 2C**  
Sliding Table Saw

**DOUCET**



**SDM**  
Door Clamp

**NWR**  
Clamp Rack



**RDM**  
Rotary Door Clamp



**Baby Bull**



**Drop Bottom**



**TSM-22**  
Pocket Hole Cutter



**TSM-35**  
Pocket Hole Cutter



**DK1100FE**  
Pocket Hole Cutter



**DK1100FP**  
Pocket Hole Cutter



Electric

Air Powered

**SPM301HD**  
Pocket Hole Cutter



**303S**  
Single Blade Rip Saw



**C12RSH**  
12" Glue Line Rip Saw



**SRS330**  
Single Blade Rip Saw

Your Source for Quality Woodworking Equipment



# AIR WORKS Ltd.



10680 Dover Road • Apple Creek OH 44606  
330.698.0388 (Ph) • 330.698.3088 (Fax)

Check out our  
Booth at Mt. Hope  
Showcase for Expo  
only Deals!

Stop in at our Store... We are OPEN 5AM-5PM...

**STANLEY**



**DEWALT**



**DYNABRAID**



**SENCO**



**SIoux**

*Leading Brands  
you Trust!*

**DEWALT**



**GAST**



**Cleco**

**NORTON**  
SAINT-GOBAIN



**MVM**  
MEADOW VALLEY MACHINERY



**DEWALT**



*Milwaukee*



**Makita**

**DEWALT**



Pick up your items at our  
store and save on freight plus  
get a free Sandwich Ticket!  
We also Ship UPS/Truck Freight



# Air Works will be Open Feb. 18-19-20

during the Air Works Auction/Mt. Hope Showcase



## ...Or visit our booth at the Mt. Hope Showcase



**Paslode**

**ProFAST**



**CALCULATED INDUSTRIES**



**DEWALT**



**DEWALT**

**DEWALT**



**WERNER**



- Nails
- Staples
- Caulk
- Adhesive
- Flashing
- Eve Guard
- Roof Felt



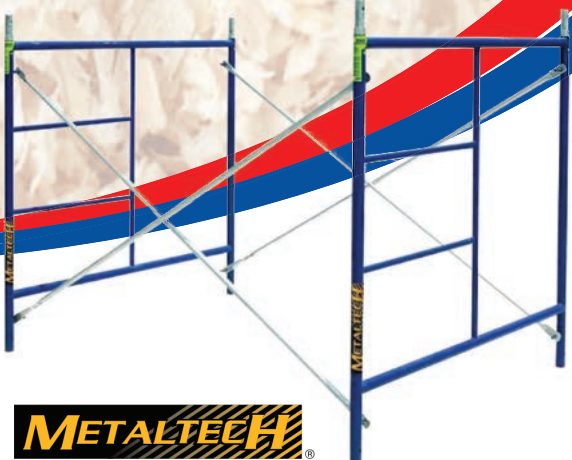
**Tapco Tools**



**iKON PRODUCTS**



**Quincy COMPRESSOR**



**METALTECH**



**Milwaukee**



**Makita**

# AVOIDING FRAMELESS CABINETS BECAUSE OF COMPLICATED ASSEMBLY?



We can change your perspective. Welcome to the latest in CNC Machining featuring Cabinet Vision software!

Contact us to take advantage of this profitable line of cabinetry.



**CREATIVE**  
WOODWORKS

128 Smokey Lane Road SW  
Sugar Creek OH 44681

330.897.2233 (Ph) • 216.359.1952 (Fax)  
sales@creativewood.works  
CreativeWood.works



# SHOWCASE EQUIPMENT LLC

## Own a Sawmill?

Call, write, or email John to  
receive our free equipment catalog



**ES** EQUIPMENT  
SHOWCASE

**SE** SHOWCASE  
EQUIPMENT LLC



Sam, Sam! Please take a look  
At this brand-new Bright Star Bid  
Book



Rhymin Simon

Yes, Simon. I understand it lets you listen to  
the auctioneer and bid over the phone if you  
can't make it to the auction. It even has 4  
pictures of each item. I called and asked to be  
placed on the Bid Book mailing list.



Sawmill Sam

**See Inside for full lineup  
of equipment!**

Want to buy?  
Call or email John Yoder (Sales):  
260-214-1481  
Email: [jy@showcaseequipment.us](mailto:jy@showcaseequipment.us)

Want to advertise or list your equipment in the  
catalog?  
Call or email Darrin Bontrager :  
574.536.1646  
[db@showcaseequipment.us](mailto:db@showcaseequipment.us)

**ES** EQUIPMENT  
SHOWCASE

May 2020

- **Band Mills**
- **Circle Mills**
- **Band Resaws**
- **Edgers**
- **Debarkers**
- **Chippers/ Grinders**
- **Transfer decks/  
Conveyors**
- **Blowers**
- **Power units**
- **Loaders/ Forklifts**

**John Yoder (Sales):**  
**260-214-1481**  
**Email: [jy@showcaseequipment.us](mailto:jy@showcaseequipment.us)**

**Address:**  
**11751 CR 12**  
**Middlebury, IN 46540**



# A-M GUTTER GUARD™

The Difference is in the DESIGN

*The aluminum leaf guard that really works!*

**Ray Miller**

Co-owner, Wholesale Representative

440-321-5336

**Aden Miller**

Co-owner, Retail Representative

440-813-5455

15225 Burton Windsor Road, Middlefield, Ohio 44062 • [www.amgutterguards.com](http://www.amgutterguards.com)



Surplus & Discounted

Building Products

Phone: 717-445-5222

Fax: 717-445-4841

150 Slate Road

Ephrata, PA 17522

M-F 7AM-5:00PM Sat 7AM-11:30AM



## Hydraulic Cylinders

Skid Steer: Lift, Tilt, Latch  
Parts: Rods, Glands, Pistons  
Standard Tie Rod and Welded  
Custom Manufacturing  
Seals and Seal kits

**Fairview Metalworks**

13911 Ditto Rd

Mercersburg, PA 17236

(240) 707-8239

Call Us!

**Our Auction mailer is delivered to 58,000 people! Would you like to advertise next time?**

**Contact Marty at 330.749.4362 to reserve your space, now!**

## A dependable heating solution for your greenhouse

• non-electric propane or natural gas •



### Your current heat:

- ✗ High maintenance
- ✗ Outside power source
- ✗ Anxiety on cold nights
- ✗ Poor plant health
- ✗ Temperature fluctuation

### Blue Flame Heat:

- ✓ Peace of mind
- ✓ Healthy plants
- ✓ Even, consistent heat
- ✓ Reliable heat source
- ✓ A good night's sleep
- ✓ Safe

Enjoy being the greenhouse owner whose heat source leaves them worry-free!

**CALL TODAY - 610-593-0337**

1634 Valley Rd. Christiana, PA 17509

**BLU FLAME  
HEATERS, LLC**

## MAT DRILL BITS and MAT DRILLING MACHINES

- Try our different bit designs for the bit for like! -

Run the EXCALIBUR bit with the GREEN ELIMINATOR Counter-Borer to see the performance for yourself!

- allows chips that are still escaping out the hole to exit through the counter-borer even as it's boring!
- replaceable carbide cutters
- Increases production
- requires less HP



"What our customers are saying (to name a few)."

- We have less headache because these bits run longer and drill better! - Lavern, Roaring Springs Lumber, Cadiz KY
- I like equipment that works and these bits and counter-borers work! This is the best counter-borer that I've ever tried. One of the reasons I think they work better is because of the hardened alloy steel which makes the bit more rigid and stronger. - Mark, Mark and Sons Logging, Plymouth NC

# CALL US FOR A QUOTE ON 7/8" MAT BOLTS!

we now sell 7/8" and 1" mat bolts

**Don't forget, we still manufacture custom drilling machines!**

6609 CR 700 E, McLeansboro, IL 62859  
phone: (618) 308-7225 or srm@sle.email



*Machines that put a smile on your face ... Service that warms your heart.*



**Hershberger**  
MANUFACTURING & SALES

7724 Bank Road • Gainesville NY 14066  
585-567-4341 Call 8 am to 8:30 am

The Summit Mechanical Truss Press



Operated by the Push of a Lever

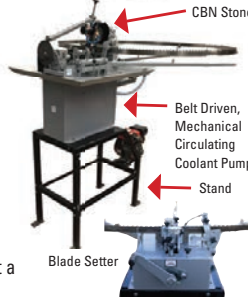
- No Air Or Hydraulics
- 3 Second Cycle Time
- Capable Of Pressing 5 - 40' Trusses Per Hour

The Summit Automatic Slab Wood Saw



- No Hydraulics
- No Air
- No Electric
- Keeps up with 10,000 plus feet a day sawmill

Brubacher Band Saw Filing Equipment



## Stop the Leak!



in cracked copper pipe

## Stop the leak permanently!



in PVC, galvanized, HDPE & copper pipes & all tanks.

## with a Tech-Patch

Impervious to gas, water, oil, weather, dirt, grease, salt, hydrocarbons, etc.



Offered by:  
Tech-Bond Solutions  
www.tbbonding.com  
877 565 7225

Tech-Patches are a polymer that is quick & easy to apply.

Stop by our booth for the Mt. Hope Show Special  
(Distributors wanted)

# Pond Aeration Windmill

Lake \* Septic \* Well  
5 Sizes \* Ships Free  
440 - 236 - 3278  
Do it Yourself Kit  
100% Wind Powered  
PondAeration.com

**PREMIER**  
Outdoors



**HUNTING**



**FOOTWEAR  
& APPAREL**



**FISHING**



**ARCHERY**



**SPORTS**



**FIREARMS**

**7799 COUNTY RD 77 // MILLERSBURG, OH 44654 // 330-473-1028**

**MOWING MADE EASY - ROTARY DECK MOWER**



**READ THIS SO YOU TOO CAN HAVE A MOWER OF YOUR DREAMS**

Once upon a time there were two brothers sixteen months apart. They grew up brain storming and doing things together like boys do; making rafts, bows and arrows. Now they are older and own Suplee Hollow Machine.

They build the Grass Hippo Rotary Deck Mower. The shop is set up for "one piece flow" production. Utilizing the "lean" concept they make daily improvements to become more efficient. Each mower can be built to clients needs. No need to wait until another batch of the model you need is built. In addition they can customize each one without interfering with their workflow.

They are setting up a dealership with Ackermans. The plan is to have machines there by February 18. Step across the road from Air Works to feel and hear the mowers. Meet the manufacturer in person and check their calendar for available slots in manufacturing and rental schedule.

**Join us  
across the  
street from  
Air Works  
Auction  
February  
18, 19 & 20th**



**SIGN UP FOR OUR FREE NEWSLETTER**

**MANUFACTURED BY**



**Abner Stoltzfus  
717-371-3440**

255 Buchanon Road  
Honey Brook, PA 19344

**NEW DEALER**



Ackerman's Equipment & Rental LLC  
P.O. Box 126 • Mt. Hope, Ohio 44660

**330.674.0495**



# Quality Used Equipment...



5199 **LADDER WAGON** 4 wheel hyd. brakes, combination tongues, 7 1/2' x 16' bed, removable uprights small front and tall rear uprights, \$3,000



5137 **PTO CART** (LD 50 - 50 HP, steel with rubber, recently gone over and serviced, field ready, \$14,500



8263 **BALE WRAPPER** (McHale 991 BC, one man operation from seat, round bales only, rental unit, wrapped approx. 1,700 bales \$5,00.00 off retail, Serial # 62849, \$20,000



5138 **SUB SOILER** (White Horse, single shank, hydraulic with reset, pull type, \$2,500



8707 **TINE WEEDER** (Pioneer, 12'- 2 - 6' sections - tongue, doubletree & neckyoke included, manual lift, choice of wheels - \$300.00 off new, \$3,800



3202 **SULKY PLOW** (Whitehorse 712, Good Condition, 14" Oliver Bottom, \$1,500



8789 **Haybine** (NH 1465 new gear box, great condition, one owner machine, \$7,800



8757 **8757 Claas Round Baler** (4 x 4, twine tie, narrow pick up, field ready, \$5,300.00

## We Provide Solutions...

Ackerman's has both New & Used equipment to fit your operation and budget.

Ackerman's has become a destination for both Horse & Small Scale Tractor Farmers around the country.

## See Our Complete Used Inventory...

Contact us for pictures and pricing, or visit [www.ackermansequipment.com](http://www.ackermansequipment.com)

If we don't have what you're looking for, we can find it. We look forward to serving you!

Store Hours: Mon. - Fri. 7am to 5pm • Sat. 8am to 12pm

8051 SR 241 • Mt. Hope, Ohio 44660 - Just across from the Event Center & Airworks Auction!

# 330.674.0495

**MANUFACTURER OF  
E-Z RIDE JOG CARTS**

STICK | MIG | TIG WELDING  
MACHINING . MOBILE WELDING  
PRODUCTION RUNS . MODIFICATION

## CONVERTIBLE CART



• ONE, TWO, OR BENCH SEAT AVAILABLE •

DEALER  
INQUIRIES  
WELCOME

**E-Z RIDE**  
jog carts

8219 County Road 192 • Holmesville, Ohio 44633  
330.600.2861

### Wildlife Treats • Flashlights

**Trail Mix**  
Wildlife Feed  
Typically mixed nuts: May contain dried fruits, M&M's, raisins, seasonings, spice.  
10 lbs. \$29 20 lbs. \$39 45 lbs. \$59

**Cheese**  
Yellow Cheddar Cubes  
10 lbs. \$37 20 lbs. \$59 40 lbs. \$99  
Mozzarella Sticks (individually wrapped)  
10.5 lbs. \$37 21 lbs. \$59 42 lbs. \$99

**Peanuts**  
(with peanut redskins)  
Chopped (birdfeed) 20 lbs. \$33 45 lbs. \$46  
Nut Snacks 22 lbs. \$39 44 lbs. \$59

**Peanut Butter**  
regular creamy  
12 lb cse (12-16 oz.) \$33 24 lb cse (24-16 oz.) \$45  
36 lb cse (36-16 oz.) \$55  
35 lb bucket (natural PB coming soon)..... (reg) \$49

**Fruits/Gummies**  
Reg Fruit Gummies (mixed flavors)..... approx 30-34 lbs \$45  
Best by July 2021 10 lbs \$29  
Dehydrated Fruit Gummies (Concord grape flavor)  
approx 25-30 lbs \$39  
Dried Bing Cherries..... 25 lbs \$49

Small Product Samples \$5.00 each + S&H

**NOW OFFERING Millertech 2ND Generation**

**5 YEAR WARRANTY**

750L Rechargeable  
750L

750 lumen headlamp.....\$49  
1800 lumen headlamp.....\$55  
750 lumen flashlight IN STOCK.....\$39  
4000 lumen flashlight.....\$125

Luxury LED 500 Lumen Headlamp.....\$29  
1-yr warranty • Rechargeable  
Similar to Millertech 750 Lumen

**Candy Corn**  
10 lbs.....\$29 20 lbs.....\$39 45 lbs.....\$59  
**Ginger Snaps** (8 oz bags) Best by April 2021  
8 lbs.....\$29 16 lbs.....\$39 40 lbs.....\$59

**Rice Crackers**  
10 lbs.....\$29 20 lbs.....\$35 40 lbs.....\$49  
**Salted Pumpkin Seeds**  
10 lbs.....\$29 20 lbs.....\$39 40 lbs.....\$55  
Roasted Soybeans 22 lbs.....\$35 44 lbs.....\$49  
Parm/Garlic Seasoning 20 lbs.....\$39 45 lbs.....\$59

Some Wildlife Treats may be short-dated or outdated

Shipping \$10<sup>00</sup> for 1st package, \$5<sup>00</sup> per additional package: FL, IA, KS, ME, MO, MN, NE, OK, WI  
▲ 4+ Items = \$5 OFF SHIPPING ▼

**5% OFF**  
Orders of \$250  
**10% off \$750**  
With business dock

**Competitive Commodities LLC**  
22 Indian Mills Road | Ballard, WV 24918  
Recorded updates  
**(304) 753-8228 ext 1**

Mixed Pallets (1,000 lbs min) Ships truck freight to business dock.  
Your Choice .99/lb (cheese \$2.25/lb) (limitations apply) Our Choice .79/lb

Mail order: If item is SOLD OUT, shall we substitute?

**Order today by mail or phone.** (Ad updated 1/7/21)  
When ordering please mention where you saw this ad.

Got chickens, deer, pigs, or steers? Try feeding Floor Sweep Peanuts: 28% Protein, 36% Fat. 1800 lb +/- Call for price and ship quote. Discounts do not apply.

# WE'VE MOVED!

VISIT OUR BRAND NEW SHOWROOM!

New Catalog Available



**HEART String**  
HEALTHY PUPPIES  
Connecting their heart to yours



## STRAIGHTLINE ENTERPRISES

11985 W 400 S • Millersburg, IN 46543  
Phone 574-642-0289 • Fax 574-642-0287

Email: [estraightlinesales@gmail.com](mailto:estraightlinesales@gmail.com)

Hours: Monday-Friday 7am-4 pm • Saturday 8am-12pm

We will be Open on Saturdays beginning January 9th



**AMS** Special Application Woodworking Machinery  
SINCE 1996

**Associated Machinery Sales, LLC**  
2403 Industrial Drive Madison, WI 53713  
Phone: 608-221-2543 Fax: 608-221-2541  
Ron's Cell: 608-575-7667  
Ron's Email: [ronm@amstool.com](mailto:ronm@amstool.com) • [www.amstool.com](http://www.amstool.com)

### SPECIAL APPLICATION WOODWORKING MACHINERY

#### AMS PRODUCT LIST

We are putting together orders for Non-Electric Planers and Ripsaws for March & April delivery

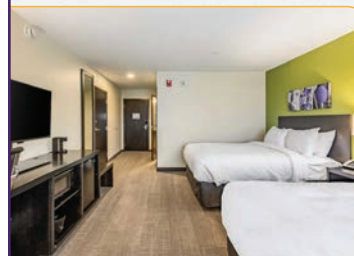
Air Compressors	Dust Collection	Panel Saws
Band Saws	Dust Pipe	Planers
Briquet Equipment	Edgebanders	Pocket Hole Machines
Clamp Carriers	Edgesanders	Power Feeders
CNC Routers	End Matchers	Radial Arm Saws
Conveyors	Felt	Ripsaws
Distressing Wheels	Financing	Sanding Sponges
Door Equipment	Gang Ripsaws	Sandpaper
Down Draft Tables	Glue Line Ripsaws	Saw Blades
Dovetail Machines	Graphite	Shapers
Drills (Line)	Jointers	Tenoners
Drill Bits	Measuring Systems	Tooling
Drill Presses	Moulders	Wide Belt Sanders
Dust Bags	Overarm Routers	USED MACHINERY

— HAVE A MACHINE NEED? CALL ME. —  
SELLING WOODWORKING MACHINERY FOR 36 YEARS

8050 SR 241  
Millersburg OH 44654  
(in Mt. Hope, OH)



330.294.9977

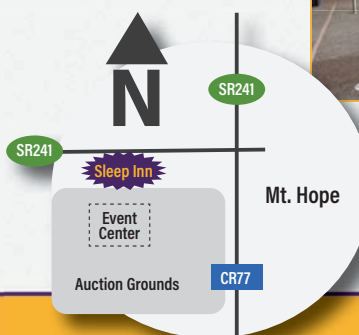


Our Standard Room

Clean, Spacious Room  
w/Complimentary Wi-Fi  
Refreshing Indoor Swimming Pool  
State-of-the-Art Fitness Room



\*Coin Laundry inside hotel\*



Adjoining the Auction & Event Center Grounds!

The perfect stay when attending the Air Works Auction & Mt. Hope Showcase!



Lot 253

# Millersburg Ohio

## Sawmill ~ Rolling Stock

At Absolute Auction!

# February 18th at 10 AM

**Sellers: Raber's Ready Cuts**

Address:  
5494 CR 68  
Millersburg, OH 44654

**No Minimums,  
No Reserves!**



Lot 252



Lot 256

**Lot 100:** Wood-Mizer LT70 Portable Bandsaw, VIN 456D724176NGA7496 with Cat engine, with hydraulic networks, 154" bands, axles and wheel included, **Lot 101:** 2-Strand Log Deck, 80" x 19", 20" off ground, hydraulic drive, **Lot 102:** Belt Conveyor, 24" x 96" with 26" steel legs, 21 1/2" belt, hydraulic drive, **Lot 103:** Bands for Wood-Mizer, **Lot 104:** Custom Built Heavy Duty Edger, 35" in feed belt, 2 movable blades, 6" edging capacity, belt drive, **Lot 105:** Hydraulic Tank, Pumps, and Line Shaft, Shaft- 56" x 2", 3 pulleys, 1st lot of an entirety, **Lot 106:** BDN Series 4500 Watt Generator, Belt drive, **Lot 107:** Saylor Beal Air Compressor, Belt drive, **Lot 108:** Entirety Lot 105-107, **Lot 109:** Skate Roller, 18" x 10' x 36" high, **Lot 110-112:** Belt Conveyor, 29 1/2" x 222" with 40" adjustable legs on one end and 17 1/2" steel legs on the other end on incline, 24" belt hydraulic drive, **Lot 113P:** Kodiak Natural Gas Engine, Model PC1327, serial # 10986031813, 120 HP, 7150 hours, with clutch, was used for lot 104, **Lot 114:** Belt Conveyor, 16" x 14' with 36" steel legs, 2 1/2" sides, hydraulic drive, **Lot 115:** Roll Case with Air Kickoff, 43 x 15' x 29" legs, 30" x 4 1/2" rolls, hydraulic drive, **Lot 116:** 4-Strand Green Chain with Air Kickoff, Moline C55D Roof Top Chain, 124" x 21", 22" steel legs, hydraulic drive, **Lot 117:** Cresswood Grinder, Model EF30, serial # 1410115, 27" x 14" vibrating conveyor infeed, **Lot 118:** Chrysler Natural Gas Engine, Model H440753, serial # E249464, 120 HP, 8 cylinder twin/disc clutch, Model SL111HP2, serial # 2026448, has new radiator core, **Lot 119:** Line Shaft, 2" x 124", 3 pulleys, includes frame and safety guards, **Lot 120:** Generator, Single phase, 120/240, **Lot 121:** Dust Blower, 24", no drive, is worn through, **Lot 122:** Industrial Up Cut Saw, Serial # 0500R-6-322384, 14" blade, includes skate rolls on each side, with foot pedal, hydraulic drive, **Lot 122A:** 32" Fan, Hydraulic drive, **Lot 123-125:** Lumber Cart, 42" x 79", 4 casters, do not swivel, **Lot 126:** Cyclone Dust Bin, good condition, **Lot 127:** Dust Pipe, Approximately 65', 10" pipe with elbow, **Lot 128:** Skid of Hydraulic Hoses, **Lot 129-136:** Self Dumping Hopper, 1/2 yard, McCdough, **Lot 137-139:** Baker Stacking Rack, Swivels, **Lot 140&141:** Belt Conveyor, 12" x 10', 4" sides, hydraulic drive, **Lot 142:** 2 Sets of Scaffolding, 5' x 7' x 4' on wheels, **Lot 143:** Truck Loading Plate, 5' x 4', **Lot 144:** Scaffolding, 6' x 29", 66" tall, adjustable, on wheels, **Lot 144A:** LP Cage, Holds 12 tanks, tanks not included, **Lot 144B:** Roll Case, 36" x 10', **Lot 145-147A:** Fuel Tank, Has 12 volt pump, 120 gallon, **Lot 148:** 4-Strand Bar Type Unscrambler, 11" x 64" x 56" high, hydraulic drive, **Lot 149:** 3-Strand Transfer Deck, 112" x 96" with 26" steel legs, hydraulic drive, **Lot 150:** 18" Stutsman Manufacturing Upcut Saw, Includes live rolls on infeed and outfeed, with air powered kickoff on outfeed, hydraulic drive, **Lot 151:** 3-Head Baker Band Resaw System, Model BBR-0, serial # 07-3950, complete run around system that is in very good condition, hydraulic drive, **Lot 151A:** Baker Resaw Bands, 13"2" x 1" X2 tooth per inch, **Lot 152:** Stutsman Manufacturing Sizer, 5 1/2" capacity, hydraulic drive, **Lot 153:** Belt Conveyor, 6 1/2" x 7'6" with 6" belt, 25" steel legs, hydraulic drive, **Lot 154:** Baker Deduster, Model BDD-0, serial # 07-407, hydraulic drive, **Lot 155:** Belt Conveyor, 24" x 27'6" with 28" steel legs, hydraulic drive, **Lot 156:** Husqvarna 390X9 Chainsaw, 20" bar, **Lot 157:** Stihl MS 460 Chainsaw, 24" bar, **Lot 158:** Stihl MS 391 Chainsaw, 20" bar, **Lot 159:** 36" Stihl Bar, **Lot 160:** Husqvarna Safety Helmet with Ear Muffs, **Lot 161-163:** Steel Banding Cart, **Lot 164:** 3/4" Steel Banding Cart, 11 rolls, **Lot 165&166:** Steel Banding Tightener/Crimper, **Lot 167:** Plastic Banding Tools, Tightener and crimper, **Lot 168&169:** Steel Banding Tightener and Crimper, **Lot 170:** DeWalt 12" Sliding Compound Miter Saw, Model DW 708, **Lot 171:** Delta 36-714 10" Table Saw, Serial # 011706Q, **Lot 172:** Northtech CFS-182 Upcut Saw, Serial # 831032, **Lot 173:** 24" Blower, Like new, **Lot 174:** Hydraulic Oil Cooler, **Lot 175:** Cyclone, **Lot 176:** Dust Pipe, **Lot 177:** John Deere Diesel, 195 HP, 6.8 L, 7003 hours, with clutch, works well, 1st lot of an entirety, **Lot 178:** Hydraulic Pumps and Gear Drive, 60" x 42" x 48" high, includes tank, 10 pumps, 10 valves, and line shaft, 10 gallon per minute and 30 gallon per minute, **Lot 179:** Quincy Air QT5 Compressor, **Lot 180:** Mecc Alte Generator, Single phase, 8400 KW, **Lot 181:** Entirety Lot 177-180, With 10% raise, **Lot 182&183:** Kawasaki Natural Gas Engine, 25 HP auto start and stop 7.7 KW generator, single phase and 3 phase, **Lot 184:** Miller Stick Welder, Trailblazer 251NP, 2670 hours, Onan performer 20 engine on a platform, **Lot 185:** Fan, valve, Baker parts, hydraulic valves, Timken Housing Unit (new), **Lot 186:** Honda Generator, EM 5000 inverter, 3595 hours, 120/240, 30 amp plug, eco throttle, **Lot 187:** DeWalt Emglo Air Compressor, Model D55270, Serial # 09991, dual tank, 5.5 Honda engine GX160, **Lot 188:** Skid of Belts, Hydraulic hoses, **Lot 189:** Grinder screen, dust pipe, skidder chain, **Lot 190:** Skid of Dust Pipe and Hoses, 8" pipe, 6" plastic hose, **Lot 191:** Kent 24 V Charger, Model V24, serial # 338144, **Lot 192:** Chicago Electric Grinder, Hand held, **Lot 193:** 9" Angle Grinder, Chicago tool, **Lot 194:** Skid of Belts, 23", 24", 8", 6", plastic chain, etc, **Lot 195:** 55 Gallon Hydraulic Tank, With electric Groz pump, 1/2 hydraulic, **Lot 196:** 27 Drawer Organizer, Filled with miscellaneous items, **Lot 197:** Waterloo Tool Chest, 8 drawers, filled with tools, etc, **Lot 198:** Gear Box, Hdrs-206-30R, size 206, ratio 30, **Lot 199:** Skid of Pulleys, V groove, 8 groove, 11 1/2", **Lot 200:** Skid of Miscellaneous, Lights, etc, **Lot 201:** Work Table, 6' x 10' x 30" with counter top, 6 drawer, lots of storage, **Lot 250:** John Deere 437C Knuckleboom, PIN T0437CX131082, Big John trailer, continuous grapple, heat, A/C, delimeter hookup, buck saw hookup, joy stick, John Deere Engine, has engine warmer, 14,379 hours, **Lot 251:** CTR Buck Saw, 5' x 7' Deck, WR-5' x 13' wings, detachable, 6" saw blade, **Lot 252:** Kubota SVL 95-2 Skid Steer, Serial # 39979, track machine, heat and A/C, joy stick, has all the latest Kubotaelectronics, 770 hours, does not include bucket, **Lot 253:** 1971 John Deere, Model 5020, 135 HP, enclosed cab, runs and shifts like new diesel, 150 hours on totally rebuilt engine, **Lot 253A:** Set of Rear Tires, Rim and tires for lot 253, JD 5020, cast iron hub, **Lot 254:** Timberjack 380B Cable Skidder, Winch, 5.9 Cummins, 60% tires, open cab, runs and works like it should, 600 hours on engine, **Lot 255:** Skidder Chains, Fits 23.1-26 tires, 1 set, like new, was used on lot # 254, **Lot 256:** 902 Cat Wheel Loader, Enclosed cab, heat and A/C, has quick attach, heat works, A/C needs some work, light, loader has 11,500 hours, new engine has 4700 hours, **Lot 257:** 8" Tooth Bucket, 80" wide, quick attach, **Lot 258:** 2 1/2 Yard Bucker, 7' wide, quick attach, **Lot 259:** Grapple Forks, Quick attach, fits skid steers and the Cat loader lot # 256, **Lot 260:** Cat Loader Bucket, 66" wide, quick attach, fits skid steers and the Cat loader lot # 256, **Lot 261:** Loader Forks, Heavy duty, 4' fork length, quick attach, fits skid steers and the Cat loader lot # 256, **Lot 262:** Corn Pro Trailer, Tandem Axle, 24,000 lb., 18' bed, 5' dovetail with ramps, 23' overall, heavy duty electric brakes, **Lot 262A:** Log Bunks, Fits Corn Pro Trailer, 54" tall, **Lot 263:** Semi Trailer Dolly, FHWA, **Lot 264:** Mitsubishi Forklift, Model FGC30K, serial # AF83C-00085, 6000 lb. lift, 3-stage mast, side shift, LP, **Lot 265:** Mitsubishi FG30 Forklift, Serial # AF13D-31267089, 6000 lb. lift, 3-stage mast, side shift, gas



Lot 254



Lot 264



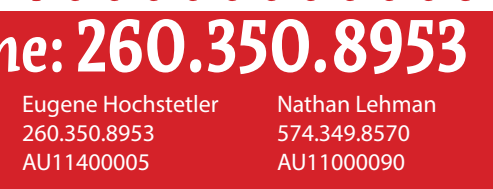
Lot 265



Lot 117



Lot 100



Lot 151

**Eugene says: You will not be disappointed in the quality at Raber's!**

**AIR WORKS**  
CONSIGNMENT AUCTION LTD.

**BRIGHT STAR**  
REALTY AND AUCTIONS, INC.

Your Equipment Auction Team

**Call Eugene: 260.350.8953**

Loren Beachy 574.825.0704 AU10500161	Eugene Hochstetler 260.350.8953 AU11400005	Nathan Lehman 574.349.8570 AU11000090
--	--	---

## Air Works Auction

Thurs. Feb. 18th 2021 at 9:00 AM

Selling with 4 Auction Crews

Fri. Feb. 19th 2021 at 8:30 AM

Selling with 14 Auction Crews

Sat. Feb. 20th 2021 at 8:30 AM

Selling with 14 Auction Crews

## The Mt. Hope Showcase

Thurs. Feb. 18th 2021

10AM to 7PM

Fri. Feb. 19th 2021

7AM to 7PM

Sat. Feb. 20th 2021

7AM to 1PM

# AIR WORKS

AIR WORKS AUCTION



Air Works Consignment Auction, Ltd.

PO Box 242 · Kidron OH 44636

330.749.4362

[AirWorksAuction.com](http://AirWorksAuction.com)

## February 18-19-20, 2021

## 2021 Air Works Auction · February 18-19-20, 2021

